

LAN Control Utility

User Manual (for XD250U-ST)

Contents

1. Introduction	2
1.1. Preparing to use network features.....	2
1.2. Functions and features	2
1.3. Operation environment	2
2. Setup	4
2.1. Installation of "ProjectorView Global+"	4
2.2. When deleting "ProjectorView Global+" (Uninstallation).....	5
2.3. Connection.....	6
3. Main screen.....	7
3.1. System settings	9
4. Projector registration	10
4.1. Registration of projector to "ProjectorView Global+"	10
4.2. When changing the projector IP settings	13
4.3. When changing projector settings	13
4.4. When deleting projector registration	15
5. Operation of projector.....	16
5.1. Operation of projector by remote controller	16
5.2. Confirmation of projector status.....	17
6. Schedule setting.....	18
6.1. Creation of projector group	18
6.2. When changing group setting	19
6.3. When deleting group.....	20
7. Mail setting	21
7.1. Connection with mail server.....	21
7.2. Mail setting.....	21
7.3. Sending test mail	21
8. ProjectorView	22
8.1. Main functions.....	22
8.2. Starting ProjectorView	22
8.3. Entering projector information.....	24
8.4. Setting the network password.....	25
8.5. Resetting the network settings.....	26
9. Visual PA (Visual PA enabled projectors Only).....	27
9.1. Starting Visual PA.....	27
10. Telnet setup (Telnet enabled projectors only).....	28
11. PJLink	29
11.1. About PJLink.....	29
12. Others	31
12.1. Troubleshooting	31
12.2. Supported Projectors	31

1. Introduction

1.1. Preparing to use network features

- Installing the ProjectorView Global+
- Assigning the projector IP address
- Configuring settings such as PASSWORD, Mail Setting, Language, and PJLink Certification Setting by running Telnet (Telnet-enabled models only) or using ProjectorView

The projector IP address, password, and PJLink certification can be configured on the projector main screen. For more information, see the section describing network settings provided in the projector's manual.

1.2. Functions and features

- 200 units of projectors can be remote-controlled at the maximum.
- Settings such as the IP address of the projector can be configured.
- You can register multiple projectors in a group and control them collectively.
- Various conditions of connected projectors can be monitored.
- Schedule of the power supply ON/OFF can be set every group.
- Schedule of the power supply ON/OFF can be set every day.
- When the communication with the projector monitored by the theft detector is disrupted, warning mail is issued to the designated address.
- Each projector can be controlled separately using a Web browser.
- When an error or warning occurs with the projector, warning mail is issued to the designated address.
- Message can be displayed on the screen of the operating projector.
- The product supports the industry standard protocol PJLink for projector control.

1.3. Operation environment

- Supported OS
Windows 2000, Windows XP, Windows Vista
- CPU
Pentium II 233 MHz or higher (recommended)
- Memory
128 MB or more (recommended)
- Free HDD space
32 MB or more (recommended)
- Web browser (When using ProjectorView)
Internet Explorer Ver. 6.0 and Ver. 7.0 (recommended)
(Java Plug-in ^{*1} must be installed and JavaScript must be enabled.)

^{*1} Installing Java Plug-in:

- (1) Download JRE6 from the JAVA download center on the Sun Microsystems Web site (<http://java.sun.com/javase/downloads/index.jsp>).
(When this file URL is not a valid location, search for "JRE6 download" using a search engine and access the download site.)
- (2) Execute the downloaded file.
- (3) After installation is complete, select [Start] - [Control Panel] - [Java Plug-in] and disable the cache.

1. Introduction

Microsoft® and Windows® are the registered trademark or trademark of Microsoft Corporation in the United States and other countries.

(The official name of Windows is Microsoft Windows Operating System.)

Pentium is the trademark or registered trademark of Intel Corporation or its subsidiaries in the United States and other countries.

The trademark of PJLink is trademark applied for registration or registered trademark of Japan Business Machine and Information System Industries Association (JBMIA) in Japan, the United States, and other countries and areas. Other company names and product names described in this document are the registered trademark or trademark of the respective holders.

Furthermore, "®" mark and "TM" mark are omitted in this document.

- Windows 2000 is referred to as Microsoft Windows 2000 Professional.
- Windows XP is referred to as Microsoft Windows XP Home Edition/Professional.
- Windows Vista is referred to as Microsoft Windows Vista Home Basic/Home Premium/Business/Enterprise/Ultimate.

2. Setup

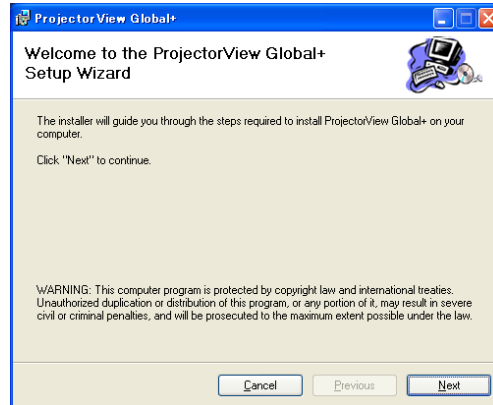
2.1. Installation of "ProjectorView Global+"

Before starting installation, be sure to read "ReadMe.txt" contained in the CD-ROM.

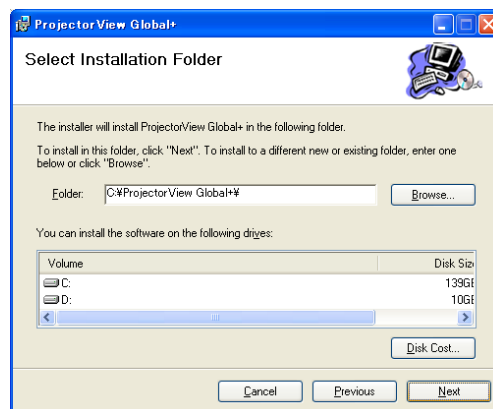
Copy ProjectorView Global+.msi contained in the Tools folder of CD-ROM to the hard disk of your personal computer.

(1) Double click "ProjectorView Global+.msi", and start up the installer of "ProjectorView Global+".

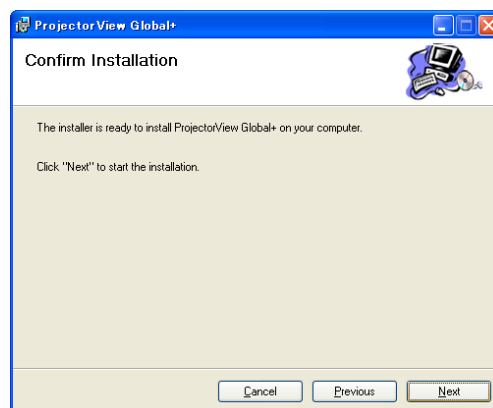
(2) The setup window is displayed. Click [Next].



(3) Select the folder to be installed, and click [Next].



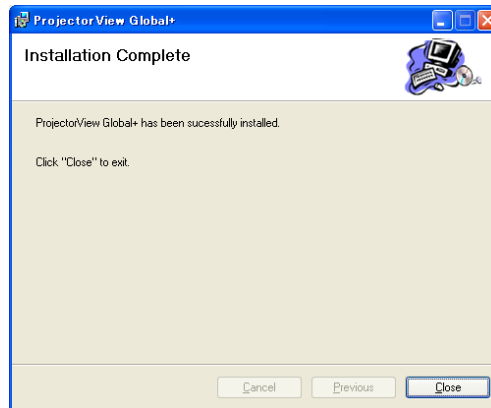
(4) Click [Next].



- Installation is started.

2. Setup

(5) When the installation has been completed, click [Close].

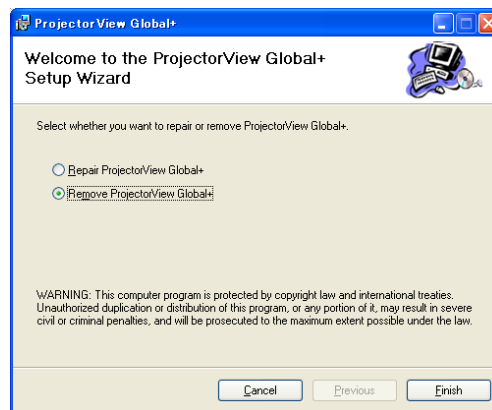


2.2. When deleting "ProjectorView Global+" (Uninstallation)

<Note>

- When uninstalling "ProjectorView Global+", "ProjectorView Global+" should be ended in advance. If the application continues operating, uninstallation can not be performed normally.

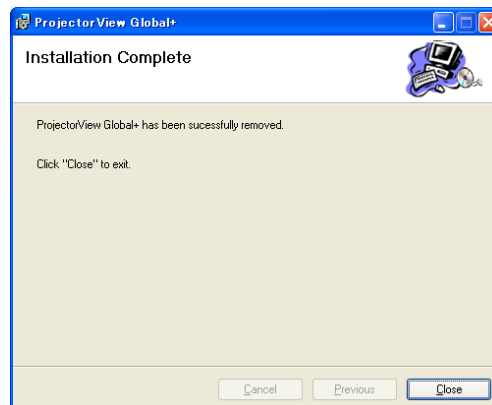
(1) Double click "ProjectorView Global+.msi", and start up the installer of "ProjectorView Global+".



(2) Select "Remove ProjectorView Global+", and click [Finish].

- The uninstallation is started.

(3) When the uninstallation has been completed, click [Close].



- Logs and setting files are not automatically deleted. Delete them manually.

2. Setup

2.3. Connection

Connect the controller PC and the projector, which have installed "ProjectorView Global+", to a commercially available LAN cable.

When connecting multiple projectors, use a commercially available hub.

- A LAN terminal is required for the controller PC.
- Use a LAN cable compatible with Category 5 and 100BASE-T.

Use a crossover LAN cable in the case of connection example 1 and use a straight-through LAN cable in the case of connection example 2.

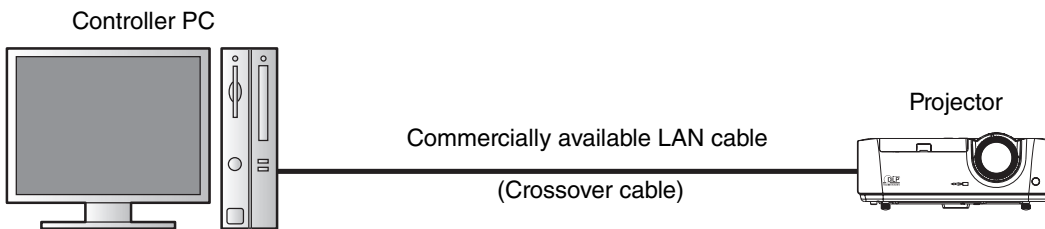
(In the case of connection example 3, see the instruction manual of the router.)

- Do not touch metal parts of the LAN terminal and LAN cable by hands charged of static electricity. Discharge of static electricity may cause a failure of the projector.
- Up to 200 units of the projectors can be registered at the maximum.

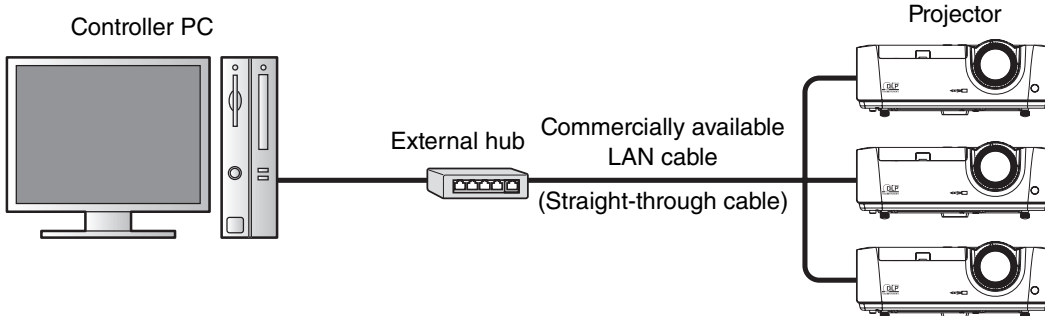
<Note>

- The LAN function may be unavailable depending on the standby mode setting of the projector. To enable the LAN function, change the setting referring to the user manual of your projector.

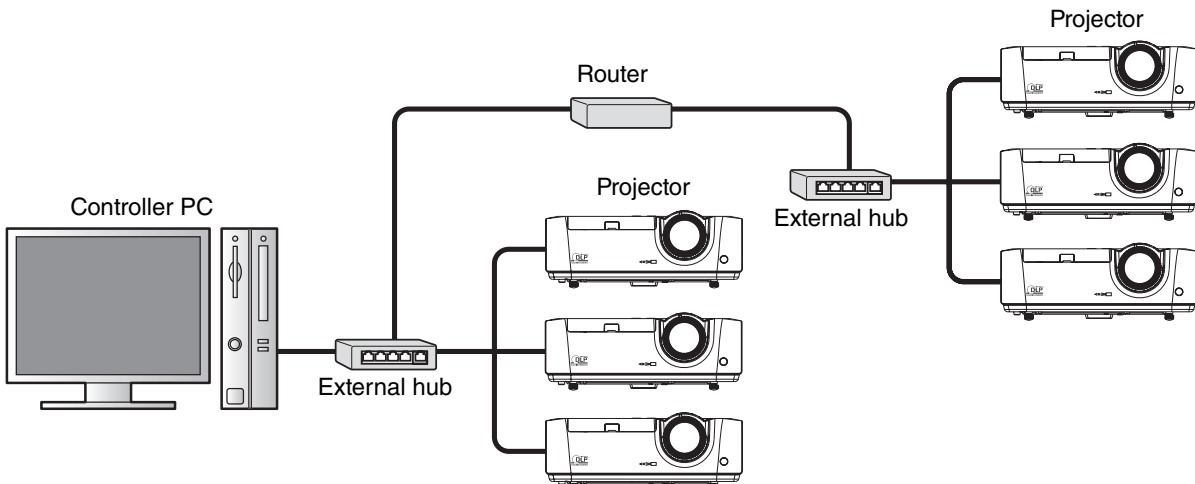
Connection example 1



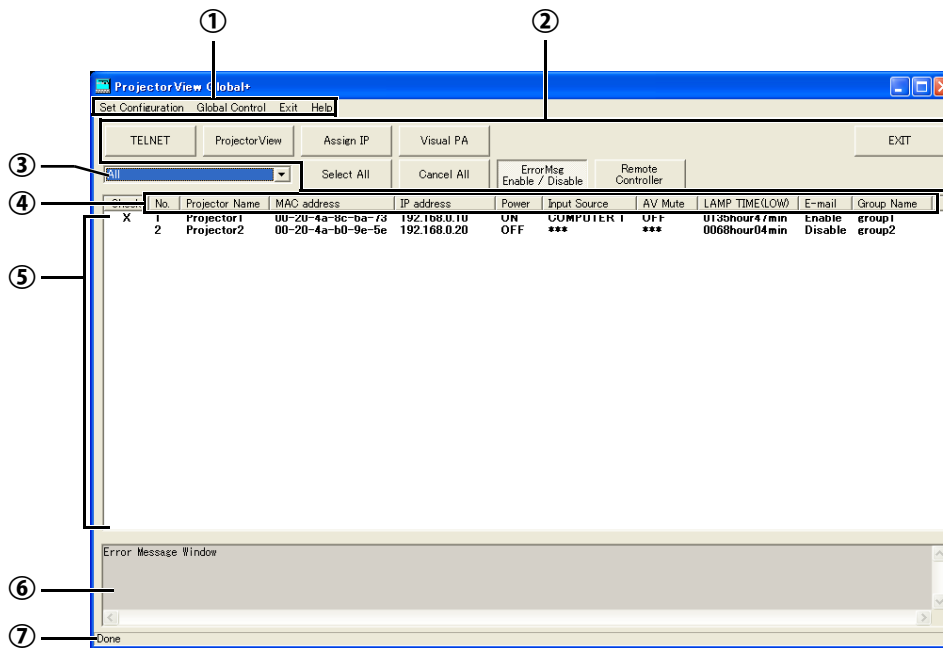
Connection example 2




Connection example 3




3. Main screen



① Menu bar	Set Configuration	Various settings can be configured, such as the new registration and editing of projector/group, mail setting, search range setting, or system setting.
	Global Control	Automatic projector search and reloading of projector status can be carried out.
	Exit	"ProjectorView Global+" will be ended. However, you cannot exit the application during the automatic projector search and the projector status loading. Even during the projector status acquisition, you can exit the application forcefully by clicking the  button at the upper right corner of the main screen. In this case, Windows warning message is displayed.
	Help	The version information is displayed.
② Tool bar	TELNET	You can make various settings using Telnet. (supported projectors only) You can set the password, ProjectorView display language, LAN control, and PJLink certification. For details, see page 28.
	ProjectorView	You can control each projector separately using a Web browser. In case of an error in the projector, the details of the error are displayed. For details, see page 22.
	Assign IP	You can set the IP address, subnet mask, and default gateway of the projector. You can type them manually or set them automatically using DHCP.
	Visual PA	You can display a line of any text on the projector screen (Visual PA enabled projectors only). For details, see page 27.
	Select All	All projectors currently displayed on the projector list can be set to selected state.
	Cancel All	All projectors currently displayed on the projector list can be set to non-selected state.
	ErrorMsg Enable/Disable	Display/non-display messages in error message display column can be designated.
	Remote Controller	Remote Controller window can be displayed to operate the projector. You can obtain the projector status, turn on/off the power, select the input source, and turn on/off the mute.

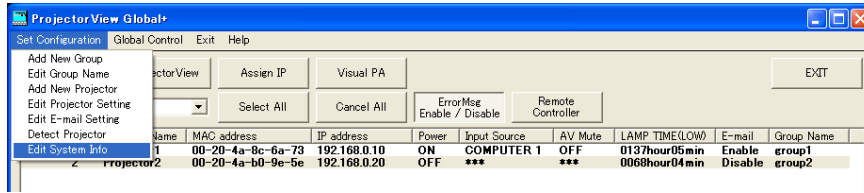
3. Main screen

EXIT	You can exit "ProjectorView Global+". However, you cannot exit the application during the automatic projector search and the projector status loading. Even during the projector status acquisition, you can exit the application forcefully by clicking the  button at the upper right corner of the main screen. In this case, Windows warning message is displayed.
③ Group select pull-down menu	Group of the projector can be selected. When you select "All", all the registered projectors are displayed. When you select "Group unsetting", projectors not belonging to any group are displayed.
④ Status tag	Property and status of the projector can be indicated. When clicking each tag button, the list can be rearranged (sorted).
⑤ Projector list display column	List of the projector which belongs to the selected group can be displayed. Status of the projector can also be displayed. The display color changes as follows depending on the condition of the projector: <ul style="list-style-type: none">• Black: In normal condition• Red: In abnormal condition (→ Check the abnormal condition by ProjectorView. When the communication fails, see "12.1. Troubleshooting.")• Black (yellow background): Warning about the lamp lifetime• White (red background): The communication with the projector monitored by the theft detector has been disrupted. (→ Check the condition. There is a possibility of theft.)• Gray: In communication inoperable condition• Blue: The projector has been registered manually but not detected by the automatic search.
⑥ Error message display column	Error messages detected in communicating with the projector can be displayed. When clicking [ErrorMsg Enable/Disable] of the tool bar, the display can be closed.
⑦ Operation status display column	Operation status of "ProjectorView Global+" can be indicated. Operation status during communication processing by remote-controlling and schedule can be indicated.

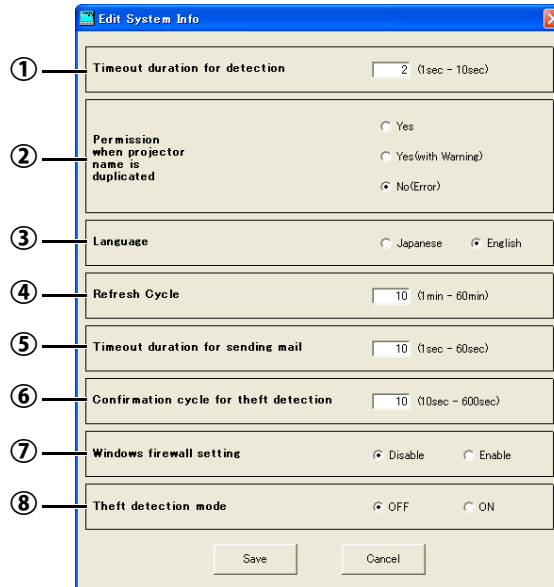
3. Main screen

3.1. System settings

(1) Select "Edit System Info" from "Set Configuration" of the menu bar on the main screen.



- "Edit System Info" window is displayed. (Default settings are shown in the following example.)



Item	Description
① Timeout duration for detection	You can set the timeout duration of the projector search. Select an integer value with no decimal part from 1 to 10 seconds.
② Permission when projector name is duplicated	You can select whether or not to permit duplicated projector names. Yes : Duplicated names are permitted. Yes(with Warning) : Duplicated names are permitted, but warning is issued. No(Error) : Duplicated names are prohibited.
③ Language	You can select the user interface language, Japanese or English.
④ Refresh Cycle	You can set the cycle to obtain the projector status. Select an integer value with no decimal part from 1 to 60 minutes.
⑤ Timeout duration for sending mail	You can set the timeout duration of sending mail. Select an integer value with no decimal part from 1 to 60 seconds.
⑥ Confirmation cycle for theft detection	You can set the cycle to perform theft detection. Select an integer value with no decimal part from 10 to 600 seconds.
⑦ Windows firewall setting	You can set the batch control application as a Windows firewall exception. Select "Enable" to treat this application as firewall exception software. However, when "Don't allow exceptions" is selected on Windows, this setting is disabled. For details, see the manual of Windows.
⑧ Theft detection mode	When you select "ON," the theft detection function is disabled. Select "ON" when changing IP addresses or making other initial settings. When you restart "ProjectorView Global+", the application automatically go back into the monitor mode.

(2) Change the settings as needed and click [Save].

- To update the settings you changed, it is necessary to restart "ProjectorView Global+."

4. Projector registration

4.1. Registration of projector to "ProjectorView Global+"

The procedures to register projectors vary among the foregoing connection examples.

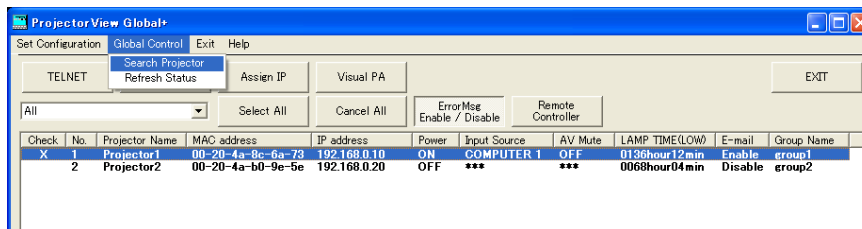
- In connection examples 1 and 2 (where projectors are installed within the same local network), the projectors within such network are automatically detected and registered. For details, see procedure A below.
- In connection example 3 (where projectors are installed via a router), specify the range of the projectors' IP addresses and then carry out automatic projector search within the range to register projectors. For details, see procedure B below.
- In addition to the procedures shown by the connection examples, you can register projectors manually without using the automatic projector search. For details, see "Manual registration of projector" on page 12.
- Up to 200 units of projectors can be registered at the maximum.
- Projectors that have just been registered by the automatic projector search aren't belonging to any group. When the projectors you registered aren't displayed on the projector list on the main screen, select "All" or "Group unsetting" from the group select pull-down menu.

Procedure A - For connection examples 1 and 2 (where projectors are installed within the same local network)

(1) Start up "ProjectorView Global+".

(2) Select "Search Projector" from "Global Control" of the menu bar on the main screen.

- The projectors connected to LAN are searched automatically.



- The password is required when you are connecting the projectors for the first time. If the projector password is changed, you need to enter that new password.

<Note>

- Ensure that the IP address of the PC and that of the projector are in the same network group. (The last octet of the IP address should contain a different value.)
- Be sure to make a note of the IP addresses you set. If you forget the IP addresses, you may not be able to detect the projectors again.
- At initial setup, DHCP or Auto IP (169.254.0.1 through 169.254.255.254) automatically assigns an IP address. Note that a different IP address may be assigned every time you start the projectors. If a connection cannot be established, execute "Search Projector".
- If you change the IP address in the projector menu after the projectors have been detected, execute "Search Projector" again.
- It is recommended that you assign an IP address of the projector to the fixed IP address.

4. Projector registration

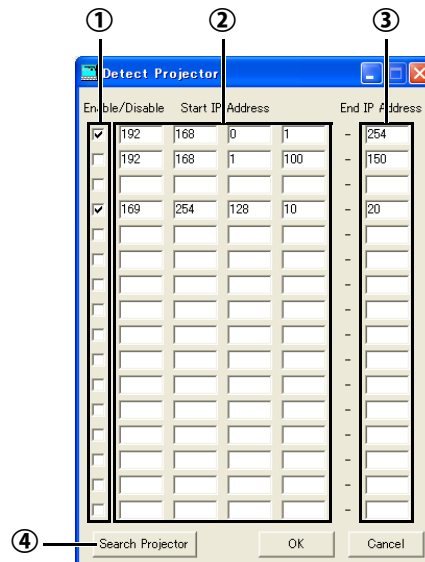
Procedure B - Connection example 3 (where projectors are installed via a router)

To automatically detect projectors connected via a router, confirm the IP address in the projector network menu and specify a range of IP addresses to search that particular IP address using "Detect Projector".

(1) Start up "ProjectorView Global+".

(2) Select "Detect Projector" from "Set Configuration" of the menu bar.

- "Detect Projector" window is displayed.



Item	Description
① Enable/Disable	Select whether to enable or disable the search range specified on that line. (The search ranges of which boxes are selected are enabled.)
② Start IP Address	Specify the IP address that is the start of the search range. (You cannot specify an IP address that contains a range other than 1 to 254 for the first and last octets and a range other than 0 to 255 for the second and third octets.)
③ End IP Address	Specify the last octet of the IP address that is the end of the search range. (You cannot specify a value that contains a number other than 1 to 254. In addition, you cannot specify a value that is smaller than the last octet of the search start IP address specified in step ②.)
④ Search Projector	The settings you made are saved and then the automatic projector search is performed.

(3) Specify the projector search range by IP address (② and ③) and check the Enable/Disable box (①) of the search range.

- Up to 16 search ranges can be set. (Settings can be configured for each line of the search range.)

(4) To save the settings, click [OK]. To continue the projector search, click [Search Projector].

- When you click [OK], the search ranges you specify are saved and the "Detect Projector" window is closed.
- When you don't want to save the search ranges, click [Cancel] to close the "Detect Projector" window.
- After saving the settings, by selecting "Global Control" on the menu bar and then selecting "Search Projector", you can perform automatic projector search within the search ranges you saved.
- The password is required when you are connecting the projectors for the first time. Authentication is automatically performed from the second time onwards unless projectors are deleted from the list.

4. Projector registration

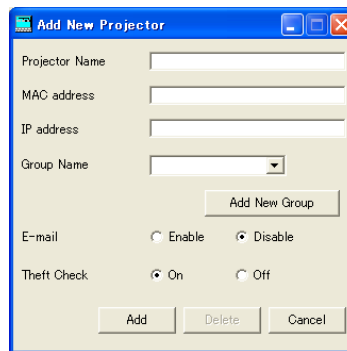
<Note>

- Set the default gateways of the projectors and PC correctly. For details, contact your network administrator.
- Be sure to make a note of the IP addresses and default gateways you set. If you forget the setting values, you may not be able to detect the projectors again.
- At initial setup, DHCP or Auto IP (169.254.0.1 through 169.254.255.254) automatically assigns an IP address. Note that a different IP address may be assigned every time you start the projectors. If a connection cannot be established, execute "Search Projector".
- If you change the IP address in the projector menu after the projectors have been detected, execute "Search Projector" again.
- It is recommended that you assign an IP address of the projector to the fixed IP address.

Manual registration of projector

(1) Select "Add New Projector" from "Set Configuration" of the menu bar on the main screen.

- "Add New Projector" window is displayed.



(2) Set the Projector Name, MAC address, IP address, and group of the projector, and enable or disable the theft warning mail and the theft detector.

Item	Description
Projector Name	Input the projector name within 64 characters in one-byte alphanumeric symbol.
MAC address	Input the MAC address of the projector. The address format is "XX-XX-XX-XX-XX-XX".
IP address	Input the IP address of the projector.
Group Name	From the pull-down menu, select the group to which the projector is belonging. (A new group can be created by clicking [Add New Group]. → See "6.1. Creation of projector group".)
E-mail	Designate the choice of sending a theft warning mail. (Setting related to mail is required. → See "7. Mail setting".)
Theft Check	Turn on or off the theft detector.

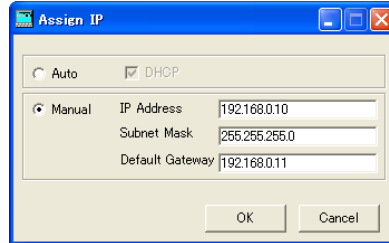
(3) Click [Save].

4. Projector Registration

4.2. When changing the projector IP settings

You can change the projector IP settings.

- (1) Select the projector which you like to change from the projector list on the main screen.
- (2) Click [Assign IP] in the toolbar on the main screen.
 - "Assign IP" window is displayed.



- (3) To automatically assign an IP address, select [Auto] and then select DHCP. To manually assign an IP address, select [Manual] and enter values for IP Address, Subnet Mask, and Default Gateway.

Item	Description
DHCP	Obtain an IP address via a DHCP server.
IP Address	Enter an IP address.
Subnet Mask	Enter the subnet mask.
Default Gateway	Enter the default gateway address.

<Note>

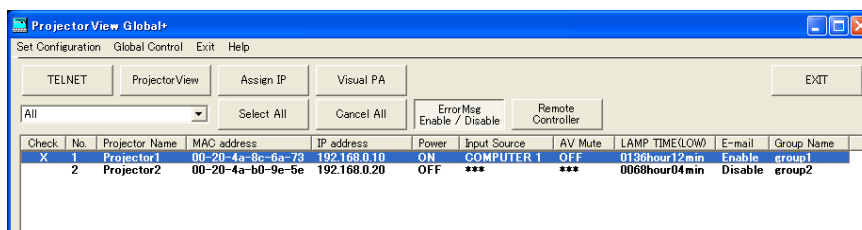
- An error dialog for theft detection may be displayed after the IP settings have been changed.
- If a connection cannot be established after the IP settings have been changed, execute "Search Projector".
- Consult your network administrator about the subnet mask and default gateway in advance.

4.3. When changing projector settings

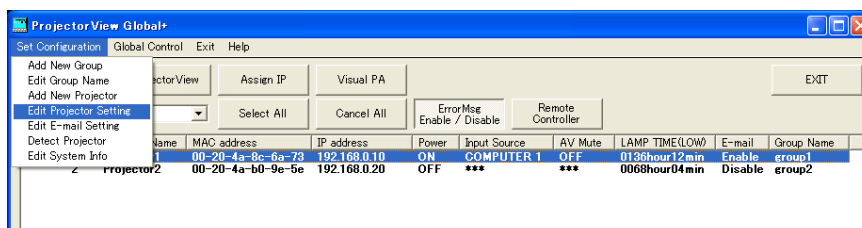
<Note>

- In the case of the projector that has been auto searched, MAC address and IP address can not be changed.

- (1) Select the projector which you like to change from the projector list on the main screen.



- (2) Select "Edit Projector Setting" from "Set Configuration" of the menu bar.



4. Projector registration

- "Edit Projector Setting" window is displayed.



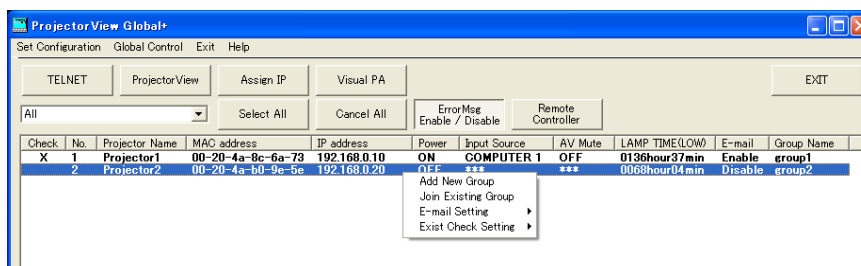
(3) Set the Projector Name and its group and enable or disable the theft warning mail and the theft detector.

Item	Description
Projector Name	Input the projector name within 64 characters in one-byte alphanumeric symbol.
MAC address	The MAC address automatically acquired by the search is displayed. The displayed address cannot be changed.
IP address	The IP address automatically acquired by the search is displayed. The displayed address cannot be changed. When it is required to change the IP address, use [Assign IP].
Group Name	From the pull-down menu, select the group to which the projector is belonging. (A new group can be created by clicking [Add New Group]. → See "6.1. Creation of projector group".)
E-mail	Designate the choice of sending a theft warning mail. (Setting related to mail is required. → See "7. Mail setting".)
Theft Check	Turn on or off the theft detector.

<Note>

In right-click menu also, the setting of the projector can be changed.

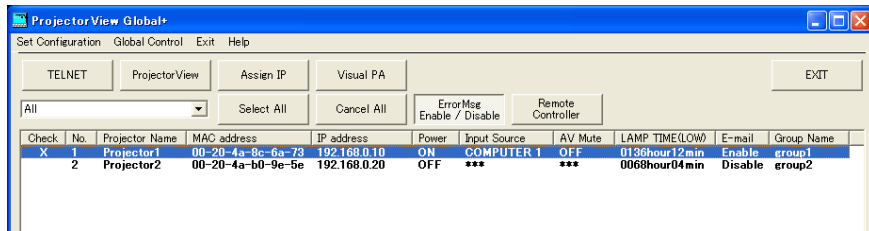
- Add New Group : Creation of a new group
- Join Existing Group : Change of the belonging group
- E-mail Setting : Change of mail setting (ON/OFF)
- Exist Check Setting : Change of theft detector setting (ON/OFF)



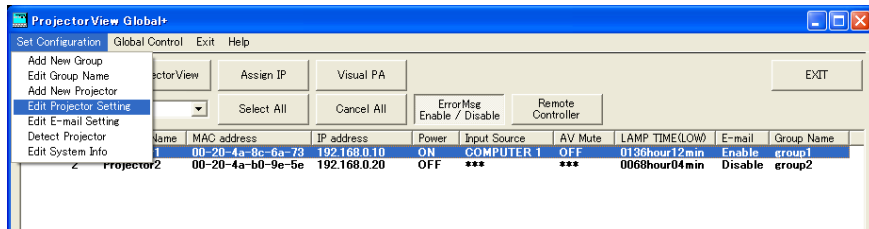
4. Projector registration

4.4. When deleting projector registration

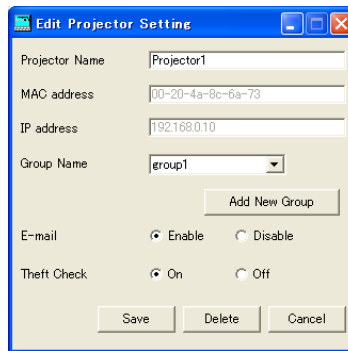
(1) Select the projector which you like to delete from the projector list on the main screen.



(2) Select "Edit Projector Setting" from "Set Configuration" of the menu bar.



- "Edit Projector Setting" window is displayed.



(3) Click [Delete].

- The selected projector is deleted.

5. Operation of projector

5.1. Operation of projector by remote controller

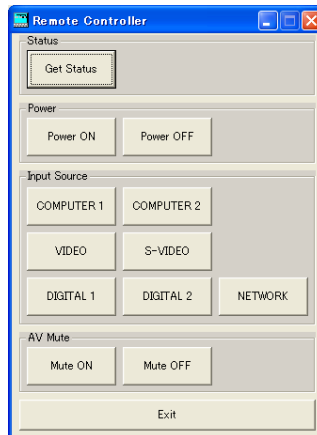
Group or single unit of projector can be operated.

(1) Select the projector which you like to operate from the projector list on the main screen.

- When selecting more than one projector simultaneously, select while pressing the Ctrl key.

(2) Click [Remote Controller] of the tool bar on the main screen or when you like to operate a certain projector, double click the projector on the projector list on the main screen.

- "Remote Controller" window is displayed.



(3) Operate the projector by selecting each operating button on the window.

Command	Button	Description
Status	Get Status	Obtain the projector status.
Power	Power ON	Turn on the power supply of the projector.
	Power OFF	Turn off the power supply of the projector.
Input Source	COMPUTER 1	Change the input signal to COMPUTER 1.
	COMPUTER 2	Change the input signal to COMPUTER 2.
	VIDEO	Change the input signal to VIDEO.
	S-VIDEO	Change the input signal to S-VIDEO.
	DIGITAL 1	Change the input signal to DIGITAL 1.
	DIGITAL 2	Change the input signal to DIGITAL 2.
	NETWORK	Change the input signal to NETWORK.
AV Mute	Mute ON	Set to the mute status.
	Mute OFF	Reset the mute status. (For more information, see the projector's manual.)
Exit		Close the Remote Controller window.

<Note>

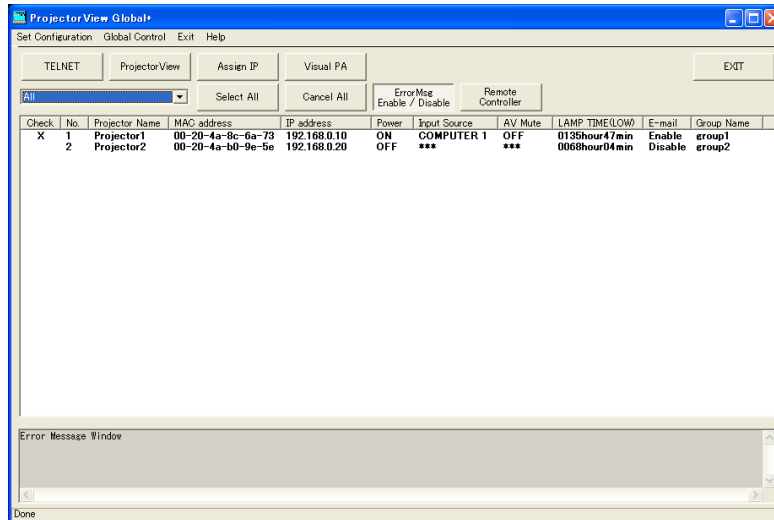
- The next operation can not be performed until the previous operation has been completed.
- The operation can not be performed during re-obtaining (refreshing) the projector status.
- It may take some time to obtain the projector status.
- It is impossible to detect the input sources and mute status while the power is off.
- Available input sources vary depending on the type of projectors. You cannot select input sources that aren't supported by the projector.

5. Operation of projector

5.2. Confirmation of projector status

The status of the projector can be confirmed.

The status of the projector is displayed on the projector list on the main screen.



Item	Description
Check	Theft detector setting (ON/OFF)
No.	Projector list registration number
Projector Name	Projector name set in the application
MAC address	MAC address of the projector
IP address	IP address of the projector
Power	Power supply status of the projector (ON/OFF)
Input Source	Input signal of the projector (COMPUTER 1/COMPUTER 2/VIDEO/S-VIDEO/DIGITAL 1/DIGITAL 2/NETWORK)
AV Mute	Mute status of the projector (ON/OFF)
LAMP TIME (LOW)	Lamp illuminating time (HHHH:MM)
E-mail	Setting of the mail sending function (Enable/Disable)
Group Name	The belonging group of projector

- The projector status is re-obtained (refreshed) automatically and periodically, but the present status can also be obtained by the user's instruction. When selecting "Refresh Status" from "Global Control" of the menu bar on the main screen, Power, Input Source, AV Mute, and LAMP TIME (LOW) status of each projector is re-obtained.
- It is impossible to detect the input sources and mute status while the power is off.
- When clicking the status tag of the projector list, the list can be rearranged (sorted). The list can be rearranged in reversed order by pressing one more time.
- When clicking [Select All] of the tool bar, all projectors in the projector list become selected state. When clicking [Cancel All] of the tool bar, all projectors in the projector list become non-selected state.
- If any abnormal state of the projector is detected by acquiring the projector status, an error message will be displayed on the error message display column at the lower part of the screen. The error messages can be selected as display/non-display. When clicking the [ErrMsg Enable/Disable] of the tool bar, the display/non-display of the error message display column will be switched at the lower part of the main screen.

<Note>

- The default cycle of the automatic re-acquisition is 10 minutes. To change this cycle, see "3.1. System settings."
- When multiple projectors are connected, it may take time to acquire the status. During acquiring the status, the status bar at the lower part of the main screen becomes "Getting status...", and it becomes "Done" when the acquisition has been completed.

6. Schedule setting

6.1. Creation of projector group

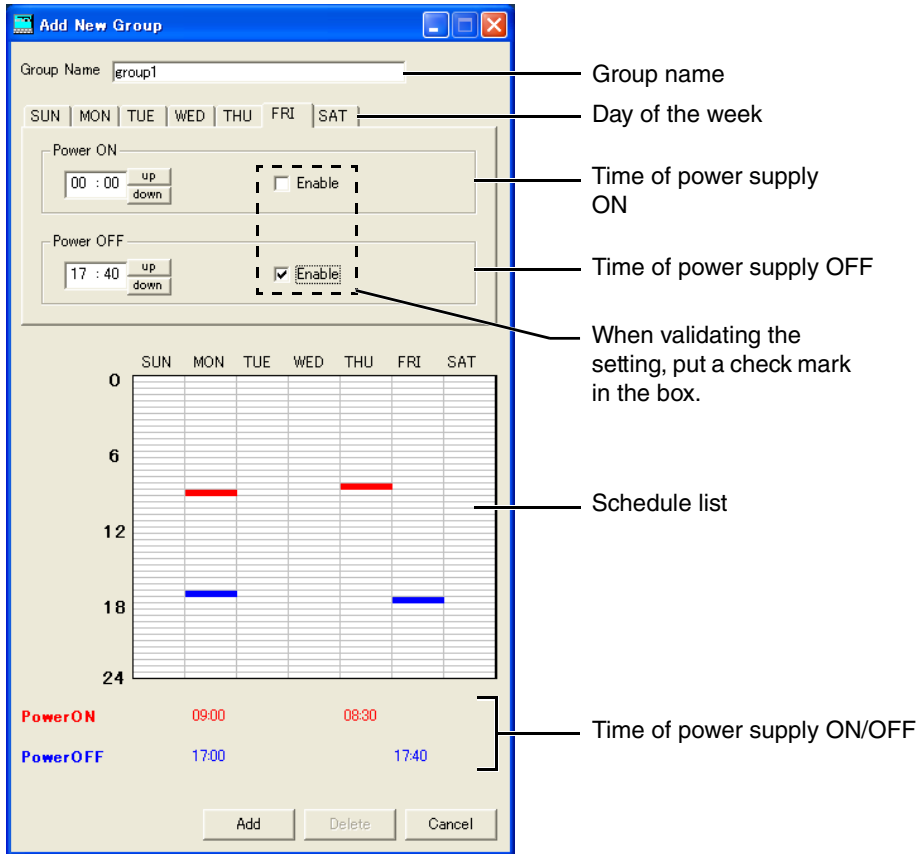
Multiple projectors can be controlled and batched by sorting groups.

Also, each group can set each time of the power supply ON/OFF every day.

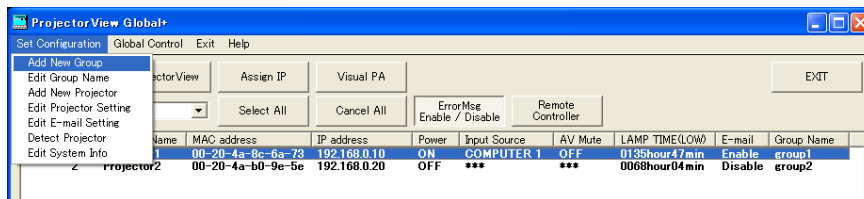
Since the schedule of the power supply ON/OFF is performed by each group, the projector which you like to operate at the same schedule should be integrated into the same group.

When Power ON and Power OFF are enabled, their time settings are indicated on the schedule list.

[Example] When setting the schedule for the group "group 1" to turn the power supply ON at 9:00 on Monday, turning OFF at 17:00 on the same day, ON at 8:30 on Thursday, and OFF at 17:40 on Friday.



(1) Select "Add New Group" from "Set Configuration" of the menu bar.



- "Add New Group" window is displayed.

- (2) Input the group name to be created in the "Group Name" column (within 16 characters in one-byte alphanumeric symbol).
- (3) Select the day of the week to be set for the time of the power supply ON/OFF.
- (4) Only when setting the time of the power supply ON, set the time in the "Power ON" column, and put a check mark in the "Enable" box.
- (5) Only when setting the time of power supply OFF, set the time in the "Power OFF" column, and put a check mark in the "Enable" box.
- (6) When there are more than one day of the week to be set for the power supply ON/OFF schedule, repeat the procedure (3) to (5).

6. Schedule setting

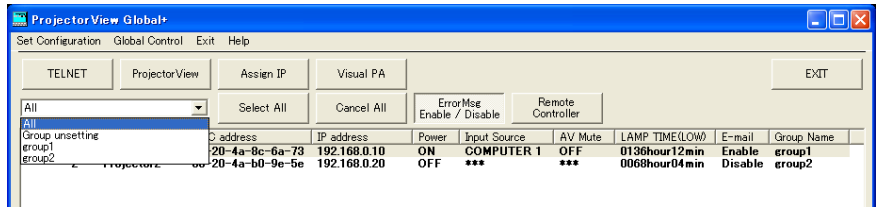
(7) Click [Add].

<Note>

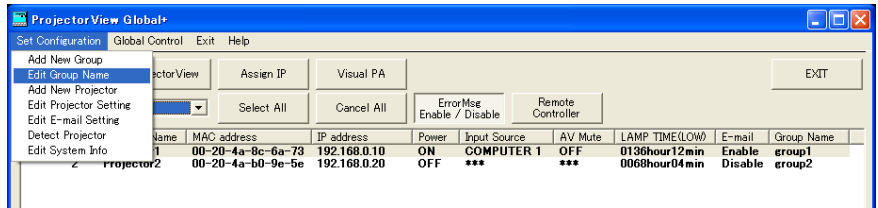
- The power supply ON and the power supply OFF can not be selected at the same time of the same day of the week.
- When starting up "ProjectorView Global+", the schedule operation can not be performed.
- When the large numbers of controlled projector units are controlled, the time to be executed by the power supply control may deviate from the setting time of the schedule.
- When utilizing the Network Time Protocol (NTP) function on the Internet, the schedule operation may not be executed because the setting time of the schedule jumps over.
- When the automatic time adjustment by summer time is valid, the schedule operation may not be executed because the time is automatically adjusted before and after switching over.

6.2. When changing group setting

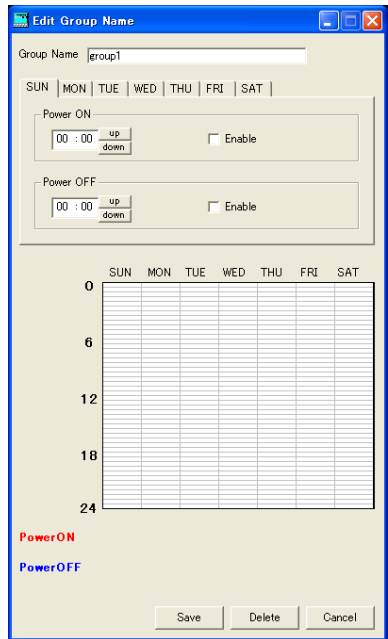
(1) Select a group which you like to change from the Group select pull-down menu on the main screen.



(2) Select "Edit Group Name" from "Set Configuration" of the menu bar.



- "Edit Group Name" window is displayed.



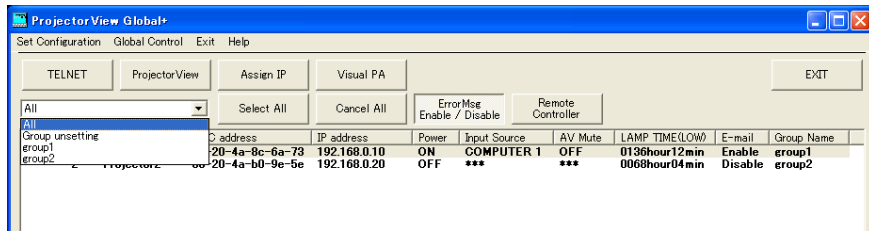
(3) Change the contents which you like to correct, and click [Save].

- Corrected contents are reflected.

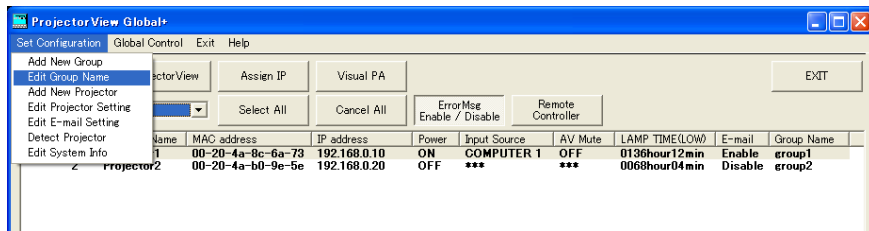
6. Schedule setting

6.3. When deleting group

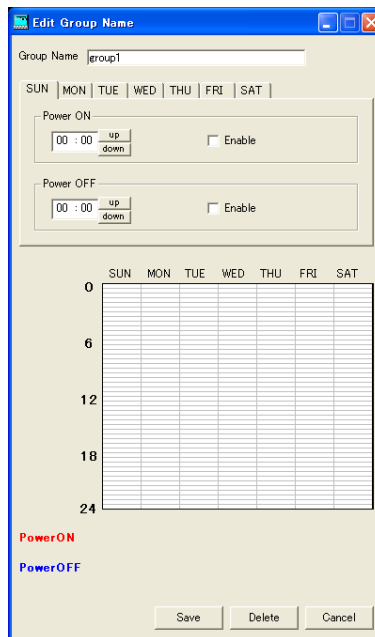
(1) Select the group which you like to delete from the Group select pull-down menu on the main screen.



(2) Select "Edit Group Name" from "Set Configuration" of the menu bar.



- "Edit Group Name" window is displayed.



(3) Click [Delete].

- The selected group is deleted.

<Note>

- When deleting a group, the projector which has belonged to the relevant group will not belong to any group. Set a new group to belong again on "Edit Projector Setting" window.

7. Mail setting

When the communication with the projector monitored by the theft detector is disrupted, a warning mail can be sent to the designated address, enabling to serve for early detection of the projector theft.
The mail setting can not be set at every projector and every group. The same setting should be set for all projectors.

7.1. Connection with mail server

Connect the mail server to the network to which the controller PC and the projector are connected that "ProjectorView Global+" is operating.

7.2. Mail setting

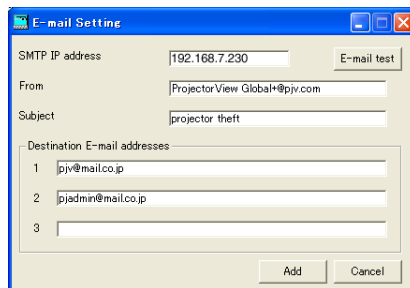
Designate the address of the mail server and the address of the destination to be sent.

<Note>

- As for the network environment, confirm to the network administrator.

(1) Select "E-mail Setting" from "Set Configuration" of the menu bar on the main screen.

- "E-mail Setting" window is displayed.



(2) Input the setting item for the network environment, and click [Add].

Item	Description
SMTP IP address	Input the IP address of the mail server (Example: 192.168.7.230), or input the domain name (Example: mail.example.com).
From	Input the character line described in From column of the mail header.
Subject	Input the character line described in Subject column of the mail header.
Destination E-mail addresses	Input the IP address of the destination to be sent within 65 one-byte characters. (Up to 3 places can be designated at the maximum.)

7.3. Sending test mail

After completing the setting of the each item on the E-mail Setting window, a test mail can be sent to confirm whether the mail is correctly delivered to the destination. When clicking [E-mail test] at the upper right on the E-mail Setting window, the test mail is issued. Confirm whether the mail is correctly delivered to the destination address.

<Note>

- If the test mail is not correctly received, confirm the address of the mail server and the destination, and the connection status of the network. For details, make an inquiry to the network administrator.
- The mail may possibly not be delivered depending on the certification function of the mail server. For details, make an inquiry to the network administrator.
- When the communication with a registered projector is disrupted, a theft check error dialog is displayed. However, the projector list isn't updated at the same time because it takes some time to update the list.

8. ProjectorView

ProjectorView is a web-browser based remote control and monitoring tool for network projectors. If you use the projectors listed in page 31, see ProjectorView in "LAN Control Utility" User Manual included with the projector.

8.1. Main functions

- It displays the status of network projectors (such as the name of the projector, lamp temperature, lamp hours, errors and alerts).
- It controls network projectors (such as powering on and off network projectors and switching input or lamp modes).
- It sends an E-mail notification when an error or warning occurs.

8.2. Starting ProjectorView

(1) Select the projector that you want to operate from the list of projectors on the main screen.

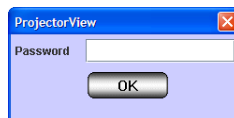
- Start ProjectorView for one projector at a time. You cannot concurrently use ProjectorView for multiple projectors.

(2) Click [ProjectorView] in the toolbar on the main screen.

- The Web browser launches automatically. The password entry window is then displayed.

<Note>

- You can start ProjectorView by manually typing the projector IP address in your web browser's address bar.
- If you are using a proxy server, do not enable proxy settings when accessing the projector IP address.
- Up to three ProjectorView units can be used to controll a single projector.



(3) Enter the password and click [OK]. (The default password is "admin".)

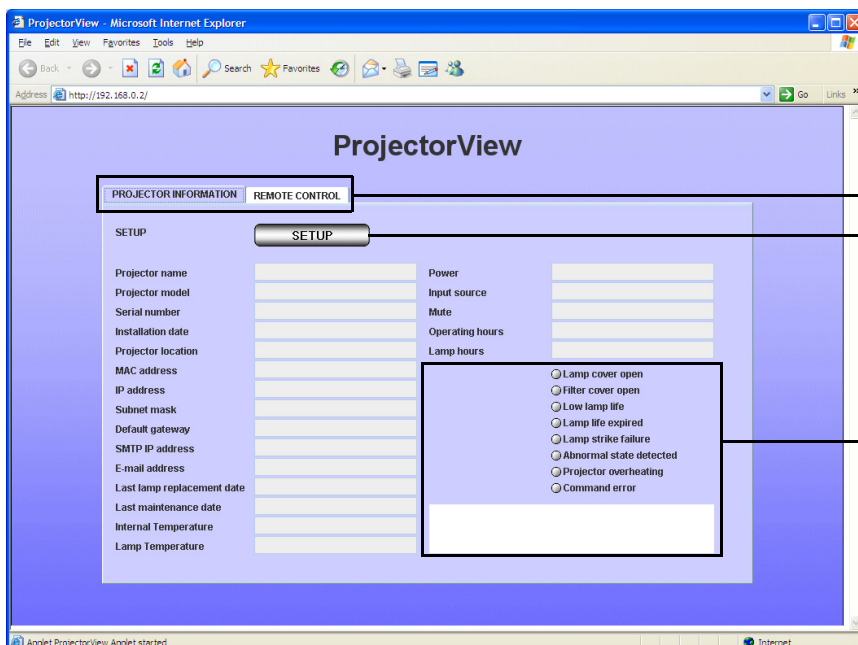
- "ProjectorView" main window is displayed.

<Note>

The connection will turn off in five minutes after the password entry window is displayed. You cannot enter the password then. If this happens, restart the ProjectView.

■ ProjectorView main window (PROJECTOR INFORMATION)

When you click PROJECTOR INFORMATION, the Projector Information window is displayed. To display the information, enter data in the SETUP window.



Click [PROJECTOR INFORMATION] to display the window on the left. Click [Remote Control] to display the main window (Remote Control).

Click [SETUP] to display the Setup window.

If there is something wrong with the projector, the red warning indicator lights. Details are displayed in the column below by pointing the cursor to the contents of failures.

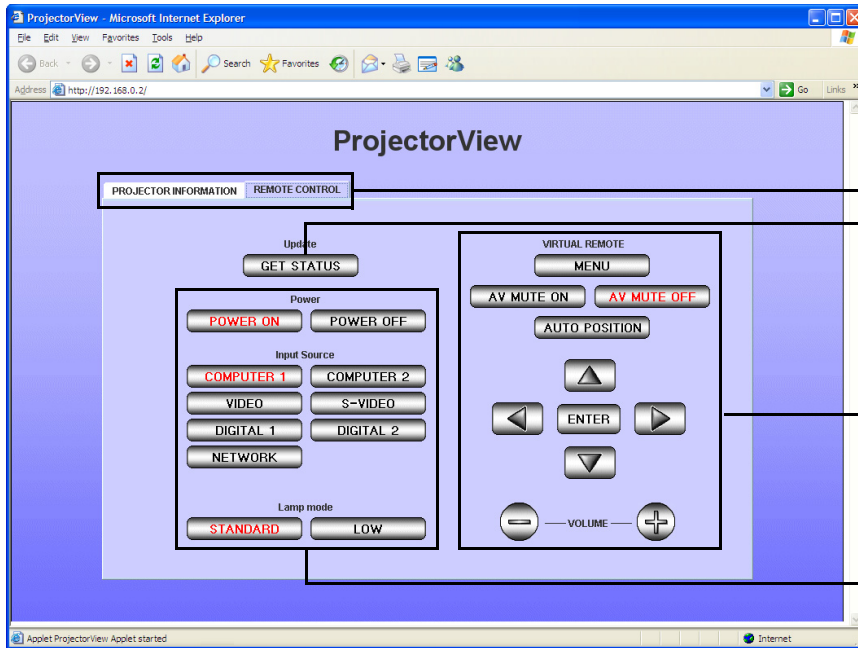
<Note>

Lamp mode cannot be switched when the projector is muted. If you try to switch it, the command error indicator lights.

8. ProjectorView

■ ProjectorView main window (REMOTE CONTROL)

When you click REMOTE CONTROL, the Remote Control window is displayed. You can click the buttons displayed in the window to remotely control the projector. Buttons with red text show the projector's current status. The status displayed in this window is updated in regular intervals. You can also manually update the status by clicking GET STATUS.



Click [REMOTE CONTROL] to display the window on the left. Click [PROJECTOR INFORMATION] to display the main window (PROJECTOR INFORMATION).

Click to obtain the status of the projector. The window is updated simultaneously.

<Note>

It may take time to update the window.

These are virtual remote control buttons. For details, see the description of the remote control button/key in User Manual.

These buttons are used to control the projector's power, input source, and lamp mode.

E-mail notification feature

When there is something wrong with the projector, an E-mail notification is automatically sent to the designated address to post an alert or error message.

To use this feature, enter the SMTP IP address, E-mail address, E-mail hostname, and sender in the Setup window. (For details, see "8.3. Entering projector information".)

Once you have configured the above settings, the E-mail notification feature remains enabled even after your web browser (the ProjectorView window) is closed.

An example: Sending an alert message when the lamp reaches end of life

ProjectorView Alert:
Lamp life expired. Replace lamp and reset lamp hours. For details, refer to the User Manual of the projector.

Projector name : abc
Projector model : XY1234
Projector location : 10Factory-5F
Serial number: 123456789
Operating hours : 2146 hours, 43 minutes
Lamp hours : 5000 hours, 0 minute
Installation date : 2008/01/01
Last lamp replacement date : 2008/01/01
Last maintenance date : 2008/01/01

"Projector model" and "Serial number" may not be displayed depending on the type of projectors.

8. ProjectorView

<Note>

- No E-mail messages are sent when a command error occurs.
- For approx. 10 seconds after the projector is powered on, the LAN and serial RS-232C commands cannot be controlled.
- The LAN command has control priority over the RS-232C command when both commands are executed simultaneously.
- You cannot switch lamp mode or mute mode on and off while the test pattern is being displayed or password is being entered.
- The projector may be slow in responding depending on the status of the projector.
- Some devices (routers) may not operate in DHCP mode.
- For approx. one minute after executing the ON and OFF commands, other commands cannot be executed.
- E-mail messages will be sent twice in two hours after a warning or error occurs.

8.3. Entering projector information

(1) Click [SETUP] in the ProjectorView main window (PROJECTOR INFORMATION).

- "SETUP" window is displayed.

<Note>

Be sure to enter data within five minutes after the SETUP window is displayed. Click OK to save changes. The connection will turn off in five minutes after the window is displayed so you need to go back to the main window (PROJECTOR INFORMATION) to access the SETUP window.

(2) Enter data in each field, set Mail Setting to ON or OFF, choose Language between Japanese and English, set PJLink Certification Setting to ON or OFF, specify Password setting, and choose to reset Network factory defaults.

<Note>

When you change the Language setting, be sure to restart the ProjectorView for the changes to take effect.

The screenshot shows a 'Projector Setup' dialog box with the following fields and options:

- Projector name: [Text Input]
- Installation date: [Text Input]
- Projector location: [Text Input]
- SMTP IP address: [Text Input]
- E-mail address: [Text Input]
- E-mail host: [Text Input]
- E-mail From: [Text Input]
- Last lamp replacement date: [Text Input]
- Last maintenance date: [Text Input]
- Mail Setting: ON OFF
- Language: Japanese English
- PJLink Certification setting: ON OFF
- Password setting: [PASSWORD]
- Network factory defaults: [RESET]
- Buttons: [OK] [CANCEL]

8. ProjectorView

The following table explains each item.

Item	Description
Projector name	Enter a unique name to identity the projector.
Installation date ^{*1}	Enter the date when the projector is installed.
Projector locatio ^{*1}	Enter the place where the projector is located.
SMTP IP address ^{*2}	Enter the IP address of the SMTP server used for sending e-mails.(e.g.192.168.0.1)
E-mail address ^{*1}	Enter the E-mail address to receive alert messages. (e.g. administrator@xxx.xxx.xxx) (Up to 64 alphanumerical characters)
E-mail host ^{*3}	Enter any hostname for the E-mail Internet header. (e.g. user)
E-mail From ^{*1}	Enter the sender of alert messages. (e.g. PJView@xxx.xxx.xxx)
Last lamp replacement date ^{*1}	Enter the date when the last change of lamp was made.
Last maintenance date ^{*1}	Enter the date when the last maintenance was done.
Mail Setting	Choose whether to send alert messages.
Language	Choose the display language of ProjectorView (Japanese or English).
PJLink Certification setting	Choose whether to set the PJLink certification setting.
Password setting	Click [PASSWORD] to access the network password setting window. (For details, see "8.4. Setting the network password".)
Network factory defaults	Click [RESET] to access the network settings reset window. (For details, see "8.5. Resetting the network settings".)

^{*1} For data entry, use single-byte alphanumerical characters and symbols (+ - / = * _ ! ? . , ; : # \$ % & () | < > [] { } " ' @).

^{*2} For data entry, use single-byte number characters and symbol (.).

^{*3} For data entry, use single-byte alphanumerical characters and symbols (- .).

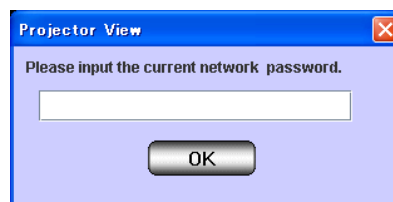
<Note>

- If lamp mode is set to "STANDARD", "Lamp hours" displayed may be longer than "Operating hours".

8.4. Setting the network password

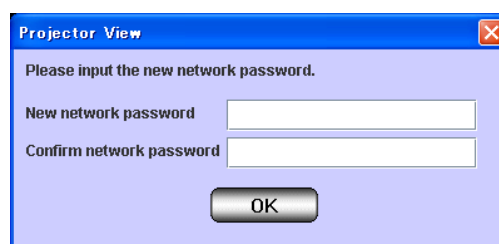
(1) Click [PASSWORD] in the SETUP window.

- The window appears to enter the current network password.



(2) Enter the current network password and click [OK]. (The default is "admin".)

- If the password is correct, another window appears to enter a new one.
- If the password is wrong, the window returns to the SETUP window.



8. ProjectorView

(3) Enter the New network password and Confirm network password, and then click [OK].

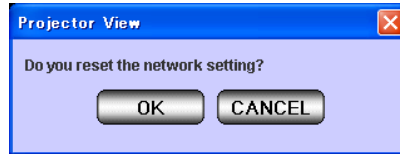
- If passwords entered match, the window closes to save the changes.
- If passwords entered do not match, an error window appears, and then the window returns to the SETUP window.

8.5. Resetting the network settings

When you reset the network settings, all data and settings specified in 8.3. Entering projector information will be reverted to factory defaults. Each field will go blank, Mail Setting will be set to OFF, Language to English, PJLink Certification Setting to ON, and Password setting to "admin".

(1) Click [RESET] in the SETUP window.

- The window appears to reset the network settings.



(2) Click [OK] to revert the network settings to factory defaults.

- If you click [CANCEL], the window closes without reset of the network settings.

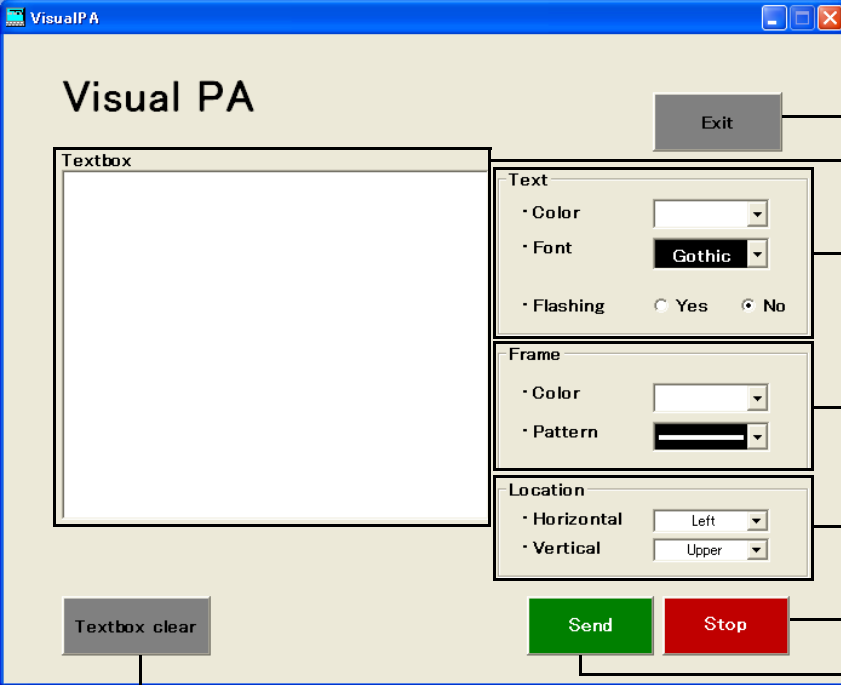
9. Visual PA (Visual PA enabled projectors Only)

Visual PA is a feature to display messages on the projector screen. It can be used for all active Visual PA enabled projectors. Visual PA is not available when using the projectors listed in page 31.

9.1. Starting Visual PA

(1) Click [Visual PA] in the toolbar on the main screen.

- "Visual PA" window is displayed.



The screenshot shows the Visual PA window with the following components and callouts:

- Exit**: Click to exit Visual PA.
- Textbox**: Enter text to display messages on the projector screen.
- Text**: Choose the color and font. You can also choose the flash text option.
- Frame**: Choose the color and pattern of the frame.
- Location**: Specify the location of messages. Choose between Horizontal and Vertical, and then choose the relative position.
- Send**: Click to display messages entered in the Textbox.
- Stop**: Click to stop displaying messages.
- Textbox clear**: Click to delete entered text in the Textbox.

(2) Specify Text, Frame, and Location, enter text, and then click [Send].

- Alphanumerical characters, space, and symbols including ! " # \$ % & () + , - _ / : ; < = > ? @ [] can be used.

(3) Click [Stop] to stop displaying the message on the projector screen.

<Note>

- If you exit Visual PA while the message is being displayed on the projector screen, a communication error may occur, and an error window may appear. If this happens, restart Visual PA and click [Stop].

10. Telnet setup (Telnet enabled projectors only)

You can set the password for ProjectorView, a web-based remote control and monitoring tool for network projectors, and the industry standard protocol PJLink based remote projector management tool, the display language on the ProjectorView, the LAN controlled mode, and the PJLink certification mode by running Telnet on the projector screen. Telnet is not available when using other than the projectors listed in page 31. Configure the above settings in ProjectorView in this case.

<Note>

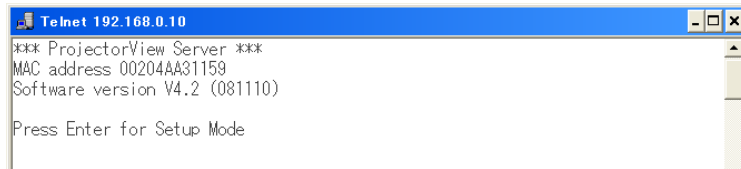
By default, Telnet is disabled on Windows Vista. To enable Telnet, go to Control Panel and select [Programs and Features]. In the left column, select [Turn Windows features on or off] and then check the box next to telnet.

(1) Select the projector that you want to configure on Telnet from the list of projectors on the main screen.

- Run Telnet on one projector at a time. Multiple projectors cannot be set simultaneously.

(2) Click [Telnet] in the toolbar on the main screen.

- A command prompt starts.
- An error message appears if the selected projector is not Telnet enabled. If this happens, configure the projector from ProjectorView.

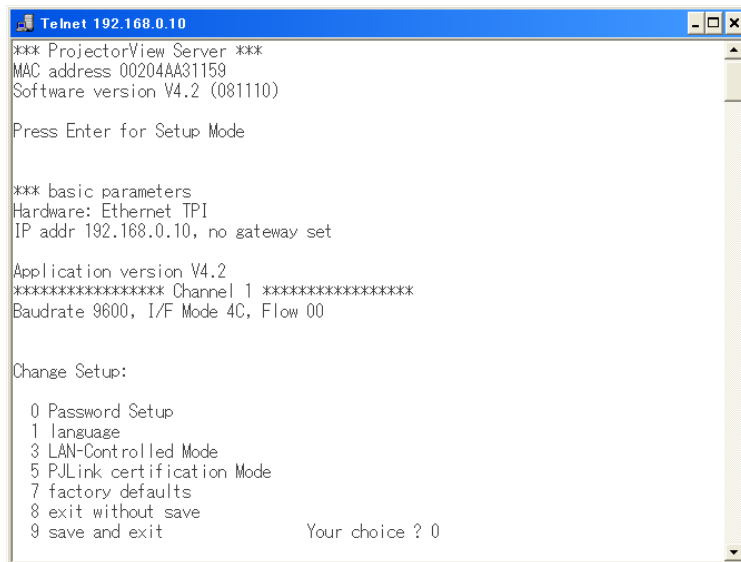


(3) Press the [Enter] key when the above screen appears.

<Note>

- Press the [Enter] key within five seconds. If not, the connection is terminated and the [Enter] key is not recognized. If this happens, exit the command prompt and start it again.

(4) Setup menus appear.



For more information on telnet, see the LAN Control Utility manual that comes with the projector.

11. PJLink

11.1. About PJLink

This projector supports the industry standard protocol PJLink for projector control. It allows you to control and monitor projector's operations using the same application among projectors of different models and different manufacturers.

To use this function, set the PJLink certification properly according to the setting of the PJLink application to be used. (see page 25 and 28.)

Supported commands

The table below shows commands to control the projector using the PJLink protocol.

Command	Description	Remark (Parameter)
POWR	Power control	0 = Standby 1 = Power on
POWR?	Inquiry about the power state	0 = Standby 1 = Power on 2 = Cooling down 3 = Warming up
INPT	Input switching	11 = COMPUTER1 12 = COMPUTER2 21 = VIDEO 22 = S-VIDEO 31 = DIGITAL1
INPT?	Inquiry about input switching	
AVMT	Mute control	30 = Video and audio mute disable 31 = Video and audio mute enable
AVMT?	Inquiry about the mute state	
ERST?	Inquiry about the error state	1st byte: Fan error, 0 or 2 2nd byte: Lamp error, 0 to 2 3rd byte: Temperature error, 0 or 2 4th byte: Cover open error, 0 or 2 5th byte: Always 0 6th byte: Other error, 0 or 2 * 0 to 2 mean as follows: 0 = No error detected, 1 = Warning, 2 = Error
LAMP?	Inquiry about the lamp state	1st value (1 to 5 digits): Cumulative lamp operating time (This item shows a lamp operating time (hour) calculated based on that LAMP MODE is LOW.) 2nd value: 0 = Lamp off, 1 = Lamp on
INST?	Inquiry about the available inputs	The following value is returned. "11 12 21 22 31"
NAME?	Inquiry about the projector name	The projector name set on the ProjectorView Setup window is returned.
INF1?	Inquiry about the manufacturer name	"MITSUBISHI" is returned.
INF2?	Inquiry about the model name	"XD250" is returned.
INF0?	Inquiry about other information	No other information is available. No parameter is returned.
CLSS?	Inquiry about the class information	"1" is returned.

11. PJLink

This projector, which is equipped with LAN terminal and manufactured by Mitsubishi Electric Corporation, is fully compliant to the specifications of JBMIA PJLink Class 1. It supports all the commands defined by PJLink Class 1, and the compliance has been verified with the PJLink standard specifications Version 1.0.

<Note>

- The above-mentioned control may not be performed correctly or the monitoring data may not be obtained correctly in the following conditions:
 - During standby
 - During input source switching
 - During command processing
 - During AUTO POSITION execution
 - During AV mute
 - Before the splash screen disappears after the power is turned on.
- During AV mute, etc., it may take approx. 5 seconds to receive a response to a command.
- Use 1 controller to control/monitor 1 projector.
- For how to control/monitor using PJLink, see the operation manual of the PJLink application you use.
- When you monitor the projector's operating state using this function by issuing inquiry commands successively, issue an inquiry command after receiving the response to the previous inquiry command from the projector.
- For the specifications of PJLink, access to the Web site of Japan Business Machine and Information System Industries Association (JBMIA). (<http://pjlink.jbmia.or.jp/english>)
- Supported command varies depending on the model of projectors. For details of the supported commands in the projectors listed in "12.2. Supported Projectors", see "LAN Control Utility" User Manual included with the projector.

12. Others

12.1. Troubleshooting

- **The projector can not be recognized.**

The projector may not be recognized automatically due to the setting of fire wall. In such case, the communication of "ProjectorView Global+" should be registered as an exception to the fire wall. For the setting of the fire wall, see the manual of the software that configures the fire wall.

- **Operation by the remote controller can not be properly performed.**

The operation may not be performed until the last operation has been completed. In such case, wait for a while and perform the operation again. In addition, confirm whether the network setting such as IP address is correct.

- **Application becomes "No reply".**

Since it may take time for processing of the automatic status acquisition, the application can not be operated during that time, and "No reply" may be displayed. Wait for a while until the processing has been ended.

- **Application cannot be operated sometimes.**

The application cannot be operated during the acquisition of the projector status. When the main power of the projector is off or projectors not actually connected are registered, the projector status acquisition may take longer time to complete because it waits until timeout. In this case, you can reduce the acquisition time by deleting unnecessary registered projectors.

- **Projectors cannot be controlled. Projector status isn't displayed.**

Try either "Initialize Network Configuration" or "7 factory defaults" on Telnet. However, note that you are required to make settings of the projectors again because they are reset to the defaults.

12.2. Supported Projectors

- "Telnet" is available in the following types of projectors. For details, see "LAN Control Utility" User Manual included with the projector.
- "Visual PA" is not available in the following types of projectors.
- If you use ProjectorView in the following types of projectors, see "LAN Control Utility" User Manual included with the projector.

XD2000U, XD1000U, WD2000, XL550U, XL650U, HL650U, WL639U, XL1550U, XL2550U, WL2650U, HL2750U, MH2850U, FL7000U, WL6700U, XL6600U, XL6500U, FL7000U(BL), FL7000LU, WL6700LU, XL6600LU, XL6500LU, HD8000, FL6900U, XD3200U, WD3300U, XD221U MD-7200LS, MD-7500LS, XD1000U(C), WD2000(C), WL639U(C), LX-510, LX-610, LW-600, LX-5120, LX-6150, LW-6100, LF-8300, LW-7700, LX-7850LS, LX-7350LS XD2000U(K), WD2000(K), XL550U(K), XL650U(K), HL650U(K), WL639U(K), XL1550U(K), XL2550U(K), WL2650U(K), FL7000U(K), WL6700U(K), XL6600U(K), XL6500U(K)
