



CADENCE

2010

MOBILE AUDIO



CADENCE

LOVE OF MUSIC PASSION FOR POWER

You don't listen to the same music everyone else does.

You don't drive the same car everyone else drives.

And you don't want the same audio equipment everyone else has.

You want the best.



WHAT'S INSIDE

xenith

Pages 4-5
Xenith Series Amplifiers

Pages 6-7
Xenith Series Speakers

Pages 8-9
Xenith Series Midrange Speakers

Pages 10-11
Xenith Series Subwoofers

Pages 12-13
Xenith Series Subwoofer Enclosures

Pages 14-15
Xenith Series Bass Patrol Packages

Flash

Pages 16-17
Flash Series Amplifiers

Pages 18-19
Flash Series Speakers

Pages 20-23
Flash Series Subwoofer Enclosures

UD SERIES

Pages 24-25
UD Series Subwoofers & Enclosures

ZRS

Pages 26-27
ZRS Series Smart Tech Amplifiers

Pages 28-29
ZRS Series Type C Amplifiers

Pages 30-31
ZRS Series Speakers

Pages 32-33
ZRS Series Specialty Speakers

Pages 34-35
ZRS Series Kits and Tweeters

Pages 36-37
ZRS Series Slim Kits and Speakers

Pages 38-39
ZRS Series Amplified Subwoofer Box

Pages 40-41
ZRS Series Subwoofers

DAYTONA

Pages 42-43
Daytona Competition Series Amplifiers

Pages 44-45
Daytona Competition Series Speakers

Pages 46-47
Daytona Competition Series Subwoofers

Pages 48-49
ZRS Series Speakers

UNITED

Pages 50-51
United Series Amplifiers

Pages 52-53
United Series Crossovers

Pages 54-55
United Series Capacitors and Wire Kits

CVL

Pages 56-57
CVL Series Signal Processors

Pages 58-59
CVL Series Coaxial Speakers

Pages 60-61
CVL Series Kits

Pages 62-63
CVL Series Midbass Speakers

Pages 64-65
CVL Series Subwoofers

Pages 66-67
CVL Series Speakers

Pages 68-69
CVL Series Tweeters

SEAQUA

Pages 70-71
Seaqua Marine Series

Xenith



SLIM. SLEEK.

Our new Cadence XeNITH amplifiers feature a slender new design that is small enough to fit anywhere but powerful enough to make your amp stand out in a crowd.

Features include fan cooling, high speed MosFET power supplies, studio grade BiPolar output transistors and 12dB adjustable crossovers. A unique bass equalizer and Tri-Mode operation capability round off this feature packed series.

Model Number	Number of Channels	4-ohm RMS Power	2-ohm RMS Power	4-ohm Bridged	XENITH POWER	Minimum THD	Frequency Response	S/N Ratio	Damping @100Hz	Channel Separation	Input Voltage	Dimensions L x W x H
xa 125.2	2	80 Watts	125 Watts	250 Watts	500 Watts	<0.1%	10Hz-40KHz	>97dB	>114	>50dB	200mV-8V	10.4" x 10.5" x 2.6"
xa 125.4	4	80 Watts	125 Watts	2 x 250 Watts	1000 Watts	<0.1%	10Hz-40KHz	>97dB	>198	>50dB	200mV-8V	13.3" x 10.5" x 2.6"
xa 175.2	2	110 Watts	175 Watts	350 Watts	700 Watts	<0.1%	10Hz-40KHz	>97dB	>136	>50dB	200mV-8V	9.75" x 10.5" x 2.6"
xa 250.2	2	150 Watts	250 Watts	500 Watts	1000 Watts	<0.1%	10Hz-40KHz	>97dB	>150	>50dB	200mV-8V	14.5" x 10.5" x 2.6"
xa 175.4	4	110 Watts	175 Watts	2 x 350 Watts	1400 Watts	<0.1%	10Hz-40KHz	>97dB	>198	>50dB	200mV-8V	14.5" x 10.5" x 2.6"
xa 300.1	mono	200 Watts	300 Watts	---	600 Watts	<0.1%	10Hz-250Hz	>97dB	>100	mono	200mV-8V	10.4" x 10.5" x 2.6"
xa 400.1	mono	300 Watts	425 Watts	---	850 Watts	<0.1%	10Hz-250Hz	>97dB	>160	mono	200mV-8V	12.8" x 10.5" x 2.6"
xa 1000d	mono	300 Watts	600 Watts	1200W @ 1 ohm	2400 Watts	<0.1%	10Hz-250Hz	>97dB	>200	mono	200mV-8V	14.5" x 10.5" x 2.6"
xa 500.3	3	110 Watts x 2+ 300 Watts x 1	175 Watts x 2+ 425 Watts x 1	1 x 350 Watts + 425 Watts x 1	1550 Watts	<0.1%	10Hz-40KHz	>97dB	>180	>50dB	200mV-8V	16.5" x 10.5" x 2.6"

Models xa175.2 and xa400.1 come standard with dashboard bass controls. Standard color: brush anodized orange. Limited availability in brushed anodized black finish.



VERTICAL TOWER

sexy.

All XeNITH amplifiers can be mounted in the traditional horizontal position or vertically with the included vertical mount brackets.

XENITH



XS 693
Three Way 6"x 9" Speaker

Specifications

Model Number	Size	Type	RMS/Peak Watts	XENITH POWER	Frequency Response	Structure Weight	SPL @ 1w / 1m	Mounting Depth
XS 694	6" x 9"	4-Way	75/250	500 Watts	50Hz-20KHz	80 oz.	92dB	3.25"
XS 693	6" x 9"	3-Way	60/200	400 Watts	55Hz-20KHz	70 oz.	92dB	3.25"
XS 652	6.5"	2-Way	45/135	250 Watts	65Hz-20KHz	30 oz.	90dB	1.61"
XS 552	5.25"	2-Way	40/125	225 Watts	70Hz-20KHz	20 oz.	89dB	1.73"
XS 452	4"	2-Way	30/100	200 Watts	85Hz-20KHz	20 oz.	88dB	1.70"
XS 6k	6.5"	Component Kit	65/200	350 Watts	60Hz-21KHz	40 oz.	91dB	2.21"
XS 682	6" x 8" 5" x 7"	2-Way	50/150	275 Watts	60Hz-20KHz	30 oz.	90dB	2.05"

- ### FEATURES
- Extended Frequency Response Speakers
 - High-Fidelity Speaker Systems
 - Black Piano Finish, Acrylic Woofer Cones
 - Transparent Smoke Finish Bridges
 - Polymide Dome Tweeters
 - Capacitor Crossover Networks
 - Slim Depth Mounting Design
 - Includes complete pairs with grills, installation hardware, and color-coded speaker wire.



USING THE LATEST TECHNOLOGY, XENITH SPEAKERS DELIVER CLEAR AND POWERFUL SOUND. A HIGH EFFICIENCY DESIGN MAKES THEM PERFECT FOR ANY HEAD-UNIT. XENITH SPEAKERS CREATE A NEW REFERENCE LEVEL FOR THE VALUE-ORIENTED MARKET.



XS 694
Four Way 6"x 9" Speaker



XS 652
Two Way 6.5" Speaker



XS 6K
Two Way 6.5" Speaker Kit



XS 452
Two Way 4" Speaker



XS 571
Two Way 5"x 7" / 6"x 8" Speaker



Xenith

Specifications

Model Number	Size	Application	Basket Type	Impedance	Dust Cap	Surround Style	RMS/Peak Watts	Frequency Response	Structure Weight	SPL @ 1w / 1m	Mounting Depth
xm 64	6"	Mid-High	Sealed Basket	4-ohm	Convex	Accordion	70/140	135Hz-10.5KHz	50 oz.	98dB	2.32"
xm 68	6"	Mid-High	Sealed Basket	8-ohm	Convex	Accordion	70/140	135Hz-10.5KHz	50 oz.	98dB	2.32"
xm 84	8"	Mid-High	Sealed Basket	4-ohm	Convex	Accordion	100/200	102Hz-10KHz	80 oz.	100dB	3.15"
xm 88	8"	Mid-High	Sealed Basket	8-ohm	Convex	Accordion	100/200	102Hz-10KHz	80 oz.	100dB	3.15"
xm 64v	6"	Mid-High	Open Basket	4-ohm	Bullet	Accordion	75/150	125Hz-10KHz	60 oz.	100dB	2.20"
xm 68v	6"	Mid-High	Open Basket	8-ohm	Bullet	Accordion	75/150	125Hz-10KHz	60 oz.	100dB	2.20"
xm 84v	8"	Mid-High	Open Basket	4-ohm	Bullet	Accordion	125/250	100Hz-11KHz	90 oz.	102dB	2.60"
xm 88v	8"	Mid-High	Open Basket	8-ohm	Bullet	Accordion	125/250	100Hz-11KHz	90 oz.	102dB	2.60"
xm 108v	10"	Mid-High	Open Basket	8-ohm	Bullet	Accordion	200/400	100Hz-11KHz	90 oz.	102dB	3.50"
xm 64hc	6"	High Compression	Open Basket	4-ohm	Bullet	Flat Foam	75/150	150Hz-15KHz	60 oz.	102dB	2.20"
xm 68hc	6"	High Compression	Open Basket	8-ohm	Bullet	Flat Foam	75/150	150Hz-15KHz	60 oz.	102dB	2.20"
xm 84hc	8"	High Compression	Open Basket	4-ohm	Bullet	Flat Foam	125/250	110Hz-17KHz	90 oz.	103dB	2.60"
xm 88hc	8"	High Compression	Open Basket	8-ohm	Bullet	Flat Foam	125/250	110Hz-17KHz	90 oz.	103dB	2.60"
xt 20	2"	Horn	Cast Tweeter	8-ohm	Bullet	Rubber	75/150	3KHz-22KHz	30 oz.	110dB	2.40"

- High Performance Mid-High Frequency Response
 - Multi Application Use
 - Shallow Mounting Depth
 - Packed Individually with Custom Wire Mesh Grills
- ## FEATURES

SEALED BASKET



VENTED BASKET



HIGH COMPRESSION



xt 20
2" Titanium Horn Tweeter



XENITH



OVERSIZED RUBBER SURROUND
ACRYLIC LAMINATE INVERTED CONE
6-LAYER VOICE COIL
INTEGRATED TINSEL LEADS
DOUBLE SPIDER SUSPENSION
EXTENDED MOTOR STRUCTURE
ONE PIECE POLE TECHNOLOGY
NICKEL-PLATED TERMINALS



Specifications

Model Number	Size	Basket Type	Voice Coil Type	Impedance	RMS/Peak Power	XENITH POWER	Frequency Response	Structure Weight	SPL @ 1w / 1m	Mounting Depth
xw 10 d2	10"	Steel	6-Layer	DVC 2-ohm	200/400	600 Watts	33Hz-1.5KHz	70 oz.	86dB	4"
xw 10 d4	10"	Steel	6-Layer	DVC 4-ohm	200/400	600 Watts	33Hz-1.5KHz	70 oz.	86dB	4"
xw 12 d2	12"	Steel	6-Layer	DVC 2-ohm	200/400	700 Watts	28Hz-1.2KHz	100 oz.	87dB	5"
xw 12 d4	12"	Steel	6-Layer	DVC 4-ohm	200/400	700 Watts	28Hz-1.2KHz	100 oz.	87dB	5"

Xenith



xbp 122

Specifications

Model Number	Enclosure Type	Woofer Size	Port Style	SPL @ 1w/1m	Impedance	RMS/Peak Watts	Frequency Response	Size WxDxH
xbp 121	Vented	Single 12"	Bass Reflex	90dB	2 or 4	300/600	35Hz-500Hz	22" x 12" x 15"
xbp 122	Vented	Dual 12"	Bass Reflex	93dB	2 or 4	300/600	35Hz-500Hz	32" x 14" x 16"
xwb 12f	Vented	Single 12"	Slot Port	90dB	2 or 4	360/700	35Hz-500Hz	22" x 16" x 16"
xwb 12fa	Vented	Single 12"	Slot Port	91dB	4 ohm	360/700	35Hz-500Hz	22" x 16" x 16"
xwb 12s	Vented	Single 12"	Turbo Port	92dB	4 ohm	400/800	33Hz-500Hz	24" x 6" x 15"

XENITH AMPLIFIED ACTIVE SYSTEMS ARE PERFECTLY MATCHED AND TUNED BASS REFLEX ENCLOSURES.

FEATURING OEM RADIO INTEGRATION, HIGH LEVEL INPUTS ENABLE HOOKUP TO YOUR SYSTEM WHEN RCA CONNECTIONS ARE NOT AVAILABLE FROM YOUR HEAD-UNIT.



CADENCE

AVIATION GRADE
BLUE/BLACK TWEED CARPET
WITH EMBROIDERED
CADENCE LOGO.

SUPER BASS
HIGH SPL RESPONSE.



xbp 121
Single 12" Passive Box

xbp121 & xbp122 feature engraved acrylic front panel with Blue LED edge lighting effect.



xwb 12F
Single 12" Passive Subwoofer Box



xwb 12FA
Single 12" Active Box

xwb 12FA has a built-in amplifier and comes complete with OEM high level radio interface and amplifier installation kit, including an external in-line fuse, power, ground, and RCA cables.

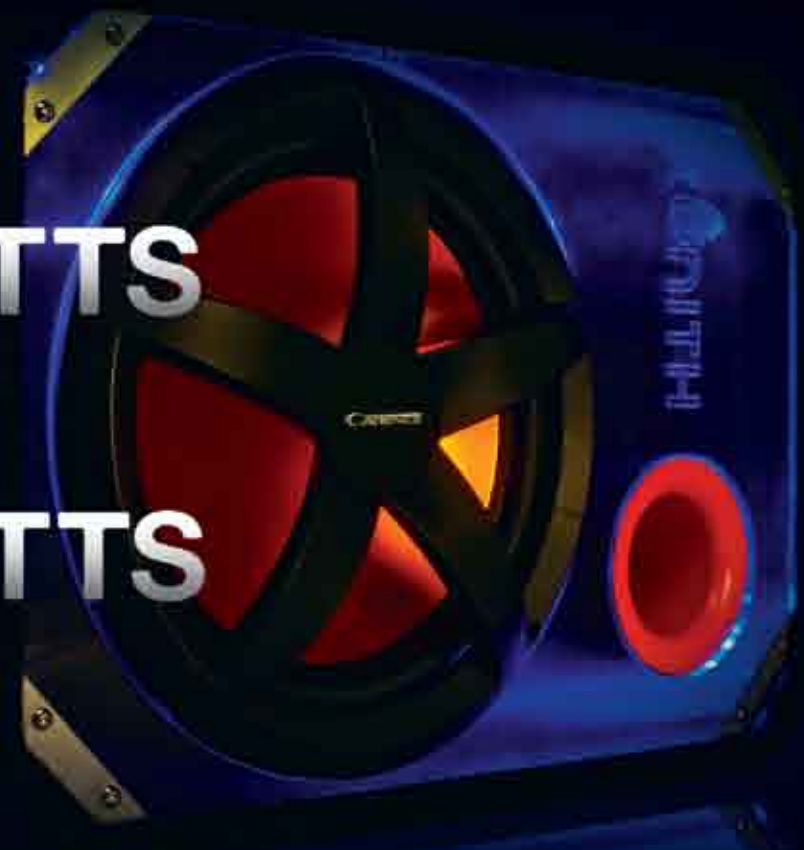
Dashboard amplifier bass knob included.



xwb 12S
Single 12" Super Slim Passive Subwoofer Box

Includes steel mounting brackets and nylon straps for vertical and horizontal mounting.

BASS PATROL XENITH



X1
SYSTEM PACK

XBP121 +
XA300.1 MONO BLOCK AMP +
AMP INSTALLATION WIRE KIT
600 WATTS

X2
SYSTEM PACK

XBP122 +
XA400.1 MONO BLOCK AMP +
AMP INSTALLATION WIRE KIT
1000 WATTS

X3
SYSTEM PACK

XBP121 +
XA125.4 4 CHANNEL AMP +
6X9 3-WAY SPEAKERS +
AMP INSTALLATION KIT
1000 WATTS

X4
SYSTEM PACK

XBP121 +
XA125.4 4 CHANNEL AMP +
6.5" 2 WAY COMPONENT KIT +
AMP INSTALLATION KIT
1000 WATTS



FEATURES

- High Speed MosFET Power Supply
- Studio-Grade BiPolar Japanese Sanken Output Transistors
- Stereo Models are 3-Channel Mixed-Mono Capable
- Fully Adjustable 12dB/Octave Crossovers
- Fully Adjustable Bass Equalizer
- Mute and Delay Soft Start System
- Full IC Controlled Protection Circuitry
- Cool Blue LED Aircraft Style Illumination
- High-Level OEM Headunit Integration Harness
- Dashboard Bass Remote Control with Selected Models



Specifications

Model Number	Number of Channels	4-ohm RMS Power	2-ohm RMS Power	4-ohm Bridged	PEAK POWER	Minimum THD	Frequency Response	S/N Ratio	Damping @100Hz	Channel Separation	Input Voltage	Dimensions L x W x H
F200-2	2	75 Watts	125 Watts	250 Watts	500 Watts	<0.05%	10Hz-40KHz	>100dB	>200	>65dB	150mV-5V	11" x 2.75" x 9"
F300-2	2	125 Watts	175 Watts	350 Watts	700 Watts	<0.05%	10Hz-40KHz	>100dB	>200	>65dB	150mV-5V	11" x 2.75" x 11"
F400-4	4	75 Watts	125 Watts	2 x 250 Watts	1000 Watts	<0.05%	10Hz-40KHz	>100dB	>200	>65dB	150mV-5V	11" x 2.75" x 13"
F600-4	4	125 Watts	175 Watts	2 x 350 Watts	1400 Watts	<0.05%	10Hz-40KHz	>100dB	>200	>65dB	150mV-5V	11" x 2.75" x 18"
F100-5	5	100W + 300W	150W + 500W	not applicable	2200 Watts	<0.05%	10Hz-40KHz	>100dB	>200	>65dB	150mV-5V	11" x 2.75" x 18"
F500-1	2-ohm mono	350 Watts	500 Watts	500W @ 2-ohm	1000 Watts	<0.05%	10Hz-40KHz	>100dB	>200	mono	150mV-5V	11" x 2.75" x 13"
F700-1	2-ohm mono	400 Watts	800 Watts	800W @ 2-ohm	1600 Watts	<0.05%	10Hz-40KHz	>100dB	>200	mono	150mV-5V	11" x 2.75" x 16"
F1200D-1	1-ohm mono	350 Watts	700 Watts	1200W @ 1-ohm	2400 Watts	<0.05%	15Hz-150Hz	>100dB	>200	mono	150mV-5V	11 x 2.75" x 16"

LET CADENCE FLASH AMPLIFIERS TAKE YOU TO THE NEXT LEVEL.

Cadence Flash amplifiers create a new standard for both the novice and experienced audio enthusiast, combining creative aesthetics, a full feature set and state-of-art electronics.

Our newest circuit design dramatically improves output power and sound quality. Bass reproduction is tight and loud while the musical passages are open and transparent.



→
F100-5
SINGLE AMPLIFIER
COMPLETE AUDIO SOLUTION
 Enough power and control for all your components and subwoofers in one complete package.





FXS 6534i
6.5" Three Way Speaker

Specifications

Model Number	Size	Type	RMS/Peak Watts	Frequency Response	Magnet Size	Structure Weight	SPL @ 1w / 1m	Mounting Depth
FXS 710-HDi	7" x 10"	3-Way	90/330	21Hz-35KHz	60 oz.	100 oz.	93dB	3.65"
FXS 693-HDi	6" x 9"	3-Way	75/240	50Hz-22KHz	45 oz.	90 oz.	92dB	3.46"
FXS 6934i	6" x 9"	3-Way	65/220	40Hz-22KHz	35 oz.	70 oz.	92dB	3.35"
FXS 6534i	6.5"	3-Way	50/160	45Hz-22KHz	15 oz.	30 oz.	92dB	1.97"
FXS 5524i	5.25"	2-Way	45/130	60Hz-22KHz	15 oz.	30 oz.	90dB	1.93"
FXS 4524i	4"	2-Way	35/110	65Hz-22KHz	9 oz.	18 oz.	91dB	1.77"
FXC 5Ki	5" Kit	Component	60/240	75Hz-20KHz	20 oz.	40 oz.	91dB	2.15"
FXC 6Ki	6" Kit	Component	75/300	65Hz-20KHz	25 oz.	50 oz.	92dB	2.24"

Certain models available in select markets only.



CADENCE FLASH SPEAKER SYSTEMS ARE THE ULTIMATE IN AFFORDABLE OEM UPGRADE REPLACEMENTS FOR THE SOUND Q FANATIC.

Utilizing the latest in technological design and components, the Flash speakers are **ultra thin and lightweight** for true mounting and installation convenience. The stiffened **injection molded poly-graphite cones in a jet-black finish** provide lightning fast attack and produce the most accurate bass and mid bass response.

The **silk, soft dome tweeters** produce a high frequency range that is transparent and untainted by distortion.

The musical playback from the Flash Speakers is so crisp and crystal-clear, the impact will make you feel as if you're sitting in the front row at a concert.



FXS 6934i
6"x 9" 3-Way Speaker



FXS 693HDi
6"x 9" 3-Way Speaker



FXS 5524i
5" 2-Way Speaker



FXS 4524i
4" 2-Way Speaker



FXC 5Ki / FXC 6Ki
5.25" Component Kit / 6.5" Component Kit



FXB 12S2

Specifications

Model Number	Enclosure Type	Woofer Size	Number of Drivers	Frequency Response	Impedance	RMS/Peak Watts	SPL @ 1w/1m	Box Size W x H x D
FXB 10C	Slot Port	10"	One	40Hz-500Hz	4 ohm	300/400	90dB	16.75" x 13.25" x 7.5"
FXB 12C	Slot Port	12"	One	40Hz-500Hz	4 ohm	400/500	90dB	20" x 15" x 7.5"
FXB 12S2	Slot Port	12"	Two	40Hz-500Hz	4 ohm x 2	800/1000	92dB	35" x 15" x 7.5"



SUPER SLIM

FXB 12C
Single 12" Super Slim Passive Subwoofer Box

Bass Reflex Tuned Slot Port Design
Black Aviation Grade Carpet with Embroidered Logo
Custom Molded Woofer Grills



FXB 10C
Single 10" Super Slim Passive Subwoofer Box

Bass Reflex Tuned Slot Port Design
Black Aviation Grade Carpet with Embroidered Logo
Custom Molded Woofer Grills





Specifications

Model Number	Enclosure Type	Woofer Size	Number of Drivers	Frequency Response	Impedance	RMS/Peak Watts	SPL @ 1w/1m
CWB 12F1	Sealed	12"	One	36Hz-500Hz	4 ohm	200/400	91dB
CWB 12F2	Sealed	12"	Two	36Hz-500Hz	4 ohm x 2	400/800	94dB
FXB 12R1	Aero Port	12"	One	33Hz-500Hz	4 ohm	250/500	92dB
FXB 12R2	Aero Port	12"	Two	33Hz-500Hz	4 ohm x 2	500/1000	95dB

Model Number	Enclosure Type	Woofer Size	Number of Drivers	Frequency Response	Impedance	RMS/Peak Watts	SPL @ 1w/1m
FXB 12V1	Slot Port	12"	One	29Hz-500Hz	4 ohm	500/1000	93dB
FXB 12V2	Slot Port	12"	Two	29Hz-500Hz	4 ohm x 2	1000/2000	96dB
GTB 12V1	Slot Port	12"	One	26Hz-500Hz	2 ohm	700/1400	96dB
GTB 12V2	Slot Port	12"	Two	26Hz-500Hz	2 ohm x 2	1400/2800	99dB



UDB 122 - 300W
2-ohm version

UDB 124 - 300W
4-ohm version

Specifications

Model Number	Size	Basket Type	Voice Coil Type	Impedance	RMS/Peak Watts	Frequency Response	Structure Weight	SPL @ 1w / 1m	Mounting Depth
UD 12S4	12"	Steel	4-Layer BASV	SVC 4-ohm	275/550	25Hz-1.5KHz	140 oz.	92dB	7.24"
UD 12D4	12"	Steel	4-Layer BASV	DVC 4-ohm	275/550	25Hz-1.5KHz	140 oz.	92dB	7.24"
UD 124HFi	12"	Steel	4-Layer BASV	SVC 4-ohm	350/700	25Hz-2.5KHz	120 oz.	94dB	6.06"
UD 154H	15"	Steel	4-Layer BASV	SVC-4-ohm	500/1000	20Hz-1.5KHz	120 oz.	95dB	7.00"



- ORANGE CHROME ELECTROLUMINESCENT CONES**
- OVERSIZED BUTYL RUBBER SURROUNDS**
- PHASE PLUG BULLET DUST CAPS**
- 2" FOUR LAYER KAPTON VOICE COILS**
- ONE PIECE EXTENDED POLE TECHNOLOGY**
- CONEX SPIDER WITH INTEGRATED TINSEL LEADS**
- NICKEL-PLATED 5-WAY BINDING POSTS**
- HEAT-PUMP EFFECT MAGNET MOTOR STRUCTURE**
- CHROME YOKE AND WASHER PLATES**



UD 12S4
12" Single 4 ohm
Subwoofer



UD 12D4
12" Dual 4 ohm
Subwoofer



UD 124HFi
12" Single 4 ohm
Subwoofer



UD 154H
15" Single 4 ohm
Subwoofer

FEATURES

- HIGH SPEED MOSFET POWER SUPPLY
- BIPOLAR JAPANESE SANKEN OUTPUTS
- 16V AND 18V CAPABLE POWER SUPPLIES
- COPPER RAIL PCB ARCHITECTURE
- PREAMP INPUT VOLTAGE: 200MV-9VOLTS
- 1Z-244H CROSSOVER CIRCUITRY
- BANDPASS CAPABLE
- BASS FOCUS WITH RUMBLE CONTROL
- PREAMP RCA OUTPUT
- ADJUSTABLE SUBSONIC FILTERS



Includes Dashboard Remote



SMART TECH
Digital Display



Featuring exclusive **GREG COMPUTER** Monitoring Circuit.
The system computer monitors amplifier temperature, input voltage, channel distortion with clipping, input overload, speaker short circuit and displays amplifier status, notifying user of condition.

Specifications

Model Number	Number of Channels	4-ohm RMS Power	2-ohm RMS Power	Maximum RMS Power	Twinn Amps Bridged	Minimum THD	Frequency Response	S/N Ratio	Damping @100Hz	Channel Separation	Dimensions L x W x H
D250.2	2	250 Watts	400 Watts	800W @ 4-ohm Mono Bridged	N/A	<0.01%	10Hz-65KHz	>102dB	>1400	>75dB	18" x 9.25" x 2.5"
D350.2	2	350 Watts	550 Watts	1100W @ 4-ohm Mono Bridged	N/A	<0.01%	10Hz-65KHz	>102dB	>760	>65dB	21" x 9.25" x 2.5"
D80.4	4	80 Watts	125 Watts	250W x 2 @ 4-ohm Mono Bridged	N/A	<0.01%	10Hz-65KHz	>100dB	>600	>65dB	12" x 9.25" x 2.5"
D125.4	4	125 Watts	175 Watts	350W @ 4-ohm Mono Bridged	N/A	<0.01%	10Hz-65KHz	>103dB	>650	>65dB	15" x 9.25" x 2.5"
D200.5	5	150W x 4 + 400W x 1	200W x 4 + 600W x 1	400 x 2 @ 4-ohm + 600W x 1 @ 2-ohm	N/A	<0.01%	10Hz-65KHz	>102dB	>550	>65dB	18" x 9.25" x 2.5"
D800M	mono	450 Watts	800 Watts	----	1600W @ 4-ohm	<0.01%	10Hz-500Hz	>90dB	>150	mono	12" x 9.25" x 2.5"
D1200M	mono	600 Watts	1200 Watts	----	2400W @ 4-ohm	<0.01%	10Hz-500Hz	>90dB	>150	mono	14" x 9.25" x 2.5"
D1300M	mono	500 Watts	900 Watts	1300 Watts @ 1-ohm	2600W @ 2-ohm	<0.01%	10Hz-500Hz	>90dB	>150	mono	14" x 9.25" x 2.5"
D1800M	mono	600 Watts	1200 Watts	1800 Watts @ 1-ohm	3600W @ 2-ohm	<0.01%	10Hz-500Hz	>90dB	>150	mono	16" x 9.25" x 2.5"
D2500M	mono	800 Watts	1400 Watts	2500 Watts @ 1-ohm	5000W @ 2-ohm	<0.01%	10Hz-500Hz	>90dB	>150	mono	20" x 9.25" x 2.5"



TYPE C



FEATURES:

- High Speed MosFET Power Supply
- BiPolar Japanese Sanken Outputs
- 16V and 18V Capable Power Supplies
- Copper Rail PCB Architecture
- Preamp Input Voltage: 200mV - 9Volts
- 12-24dB Crossover Circuitry
- Bass Focus with Rumble Control
- Preamp RCA Output
- Adjustable Subsonic Filters
- Adjustable Phase Control
- Soft Start Mute and Delay
- Power & Diagnostic LED Indicators
- Twin Amp Bridgeable to 2x Power Output
- Master/Slave Configurable
- Dashboard Bass Remote Control



Specifications

Model Number	Number of Channels	4-ohm RMS Power	2-ohm RMS Power	Maximum RMS Power	PEAK POWER	Minimum THD	Frequency Response	S/N Ratio	Damping @100Hz	Channel Separation	Power Supply	Dimensions L x W x H
C1	mono	800W	1400W	2250W @ 1-ohm	4500W	<0.01%	10Hz-500Hz	>88dB	>100	mono	16V	20" x 11.6" x 2.7"
C2	2	400W X 2	700W X 2	1000W X 2 @ 1-ohm	4000W	<0.01%	10Hz-86KHz	>100dB	>200	>65dB	16V	26" x 11.6" x 2.7"
C3	4/3	160W X 2 + 300W X 2	275W X 2 + 450W X 2	375W X 2 + 650 X 2 @ 1-ohm	4100W	<0.01%	10Hz-40KHz	>100dB	>200	>65dB	16V	27" x 11.6" x 2.7"
C4	4	150W X 4	225W X 4	450W X 2 @ 4-ohm Bridged	1800W	<0.01%	10Hz-40KHz	>100dB	>500	>65dB	16V	22" x 11.6" x 2.7"
C5	mono	1250W	2500W	5000W @ 1-ohm	10KW	<0.01%	10Hz-500Hz	>100dB	>100	mono	18V	23" x 11.6" x 2.7"
C6	mono	1500W	3000W	6000W @ 1-ohm	12KW	<0.01%	10Hz-500Hz	>100dB	>100	mono	18V	26" x 11.6" x 2.7"
C7	mono	1750W	3500W	7000W @ 1-ohm	14KW	<0.01%	10Hz-500Hz	>100dB	>100	mono	18V	27" x 11.6" x 2.7"
C8	5	150W x 4 + 400W x 1	200W x 4 + 600W x 1	400 x 2 @ 4-ohm+ 600W x 1 @ 2-ohm	2000W	<0.01%	10Hz-40KHz	>100dB	>500	>65dB	16V	17" x 11.6" x 2.7"
C9	4	100W x 4	150W x 4	300W x 2 @ 4-ohm Bridged	600W	<0.01%	10Hz-40KHz	>100dB	>640	>65dB	16V	15" x 11.6" x 2.7"
C65	mono	600W	1200W	1200W @ 2-ohm	2400W	<0.01%	10Hz-500Hz	>88dB	>100	mono	16V	14" x 11.6" x 2.7"



Includes Dashboard Remote



ZRS57
5" x 7" / 6" x 8"
2-Way Speaker

Specifications

Model Number	Size	Type	RMS/Peak Watts	Frequency Response	Magnet Size	Structure Weight	SPL @ 1w / 1m	Mounting Depth
ZRS69	6" x 9"	3-Way	85/275	40Hz-22KHz	25 oz.	50 oz.	95dB	3.46"
ZRS65	6.5"	2-Way	70/200	60Hz-22KHz	20 oz.	40 oz.	93dB	2.75"
ZRS60E	6.5" Euro Mount	2-Way	70/200	60Hz-22KHz	20 oz.	40 oz.	93dB	2.75"
ZRS55	5.25"	2-Way	60/180	90Hz-22KHz	15 oz.	30 oz.	92dB	2.36"
ZRS46	4" x 6"	2-Way	60/180	90Hz-22KHz	10 oz.	20 oz.	92dB	2.09"
ZRS45	4"	2-Way	50/150	100Hz-22KHz	10 oz.	20 oz.	92dB	2.15"
ZRS57	5" x 7" / 6" x 8"	2-Way	70/200	35Hz-22KHz	20 oz.	40 oz.	93dB	2.75"

Complete with custom sculptured grills and installation hardware.

ZRS69 - 3-Way Design
1.25" Oversize Voice Coil
1" Titanium Dome Neo Midrange
Extended Frequency 18mm Silk Soft Dome Tweeter

CADENCE

ZRS

THE NEW ZRS SERIES

IS UNMISTAKABLY

CADENCE.

PROFESSIONAL STUDIO

GRADE QUALITY MEANS

YOUR SYSTEM WILL

DELIVER DYNAMIC

SOUND WITH NATURAL

TRANSPARENCY,

UNMATCHED IMPACT,

AND PERFECT

IMAGING.

Black Polypropylene Mica Injected Cones
Butyl Rubber Surrounds
Oversize Kapton® Voice Coils
Titanium Dome Neodymium Midranges & Tweeters
High Grade Mylar Capacitor Crossover Network



ZRS69
6" x 9" 3-Way Speaker



ZRS65 / ZRS60E
6.5" 2-Way Speaker



ZRS55
5.25" 2-Way Speaker



ZRS45
4" 2-Way Speaker



ZRS46
4" x 6" 2-Way Speaker





ZRS710
7" x 10"
3-Way Speaker

Specifications

Model Number	Size	Type	RMS/Peak Watts	Frequency Response	Magnet Size	Structure Weight	Impedance	SPL @ 1w / 1m	Mounting Depth
ZRS710	7" x 10"	3-Way	125/350	25Hz-22KHz	60 oz.	100 oz.	3-ohm	96dB	3.66"
ZRS710-KIT	7" x 10" Kit	3-Way	130/400	30Hz-22KHz	35 oz.	70 oz.	4-ohm	95dB	3.70"
ZRS103i	10"	3-Way	140/450	20Hz-30KHz	75 oz.	130 oz.	3-ohm	96dB	4.37"
ZRS812i	8" x 12"	3-Way	140/450	25Hz-30KHz	75 oz.	130 oz.	3-ohm	98dB	5.12"

Kevlar Reinforced Paper Pulp Cones, 2" Four-Layer Kapton® Voice Coils, Oversized Butyl Rubber Surrounds, Chrome Plated Yoke and Washer Plates, Extended Magnet Motor Structures, One Piece Extended Pole Technology, Conex Spider with Integrated Tinsel Leads, Nickel Plated 5-Way Binding Posts, Ferro-Fluid enhanced Voice Coil Cooling System, Audiophile Mylar Capacitor Crossover Network



ZRS710KIT

7" x 10" Three Way Component System
Phase Plug Bullet Dust Cap
2" Silk Dome Tweeter with Trim Panels
1" Titanium Dome Neodymium Magnet Tweeters
Impedance Matching 12dB Three Way Crossover Network
Tweeters include flush, surface and bullet dash mounts.
All speakers come complete with grills, wires and mounting hardware.

ZRS812i
8" x 12" 3-Way Speaker



ZRS103i
10" 3-Way Speaker





ZRS6K
6.5" Component Kit

Specifications

Model Number	Size	Type	RMS/Peak Watts	Frequency Response	Magnet Size	Structure Weight	Impedance	SPL @ 1w / 1m	Mounting Depth
ZRS-5K	5.25" Kit	2-Way	75/250	65Hz-22KHz	15 oz.	30 oz.	4-ohm	92dB	2.36"
ZRS-6K	6.5" Kit	2-Way	100/300	55Hz-22KHz	20 oz.	40 oz.	4-ohm	93dB	2.75"
ZRS-60KE	6.5" Euro Mount	2-Way	100/300	55Hz-22KHz	20 oz.	40 oz.	4-ohm	93dB	2.75"
ZRS40T	1" / 25mm	Tweeter	70/140	1.2KHz-25KHz	NEO	-----	4-ohm	94dB	.875"
ZRS30T	1" / 25mm	Tweeter	30/60	1.3Kz-24KHz	NEO	-----	4-ohm	93dB	.75"
ZRS75T	1" / 25mm	Tweeter	100/200	5KHz-22KHz	HYBRID	-----	4-ohm	97dB	.75"
ZRS2M	2"	Mid-Tweet	100/200	200KHz-2.5KHz	10 oz.	20 oz.	4-ohm	93dB	1.20"



ZRS-40T Neo Tweeter
New and improved design, now with bullet chamber surface mount. 25mm Silk Soft Dome with swivel action.
Complete pair with in-line 12dB crossovers, flush, surface, and angle mounts.

ZRS-30T Neo Tweeter
25mm Silk Soft Dome tweeter with swivel action tweeter housing.
Complete pair with in-line 12dB crossovers, flush, surface, and angle mounts.

ZRS-75T Hybrid Tweeter
Hybrid high efficiency composite dome tweeter. Built-in diffuser and step up transformer coil for high power and extreme SPL.
Built-in 6dB crossovers, complete with flush, surface, and angle mounts.

ZRS-2M Soft Dome Mid
2" silk, soft dome midrange-tweeter. Surface mount.
Complete pair with in-line mylar bass-blocker capacitor.



ZRS 40T
Tweeter



ZRS 30T
Tweeter



ZRS 75T
Tweeter



ZRS 2M
Midrange - Tweeter

ZRS SLIM

ULTRADRIVE



ZRS 55S
5.25" Super Slim
2-Way Speaker

Specifications

Model Number	Size	Type	RMS/Peak Watts	Frequency Response	Magnet Size	Structure Weight	SPL @ 1w / 1m	Mounting Depth
ZRS69-S	6" x 9"	2-Way	80/160	60Hz-22KHz	15 oz.	30 oz.	95dB	2.36"
ZRS65-S	6.5"	2-Way	60/120	100Hz-22KHz	8 oz.	16 oz.	94dB	2.00"
ZRS55-S	5.25"	2-Way	50/100	120Hz-22KHz	8 oz.	16 oz.	93dB	1.90"
ZRS55-KS	5.25" Kit	2-Way	60/120	90Hz-22KHz	8 oz.	16 oz.	92dB	1.90"
ZRS65-KS	6.5" Kit	2-Way	75/150	85Hz-22KHz	8 oz.	16 oz.	93dB	2.00"

Low Profile, Super Slim Upgrade Speakers

Internal Magnet Motor Structure

Kevlar Fiber Composite Pulp Cones

High power Kapton® Voice Coils

Butyl Rubber Surrounds

Silk Dome Neodymium Tweeters

Ferro-Fluid Tweeter Voice Coil Cooling



ZRS 69S
Super Slim 6"x 9" 2-Way Speaker

High-Grade Audiophile Capacitor Crossover Network



ZRS 65S
Super Slim 6.5" 2-Way Speaker

High-Grade Audiophile Capacitor Crossover Network



ZRS 65KS
Super Slim 6.5" Speaker Kit
ZRS 55KS
Super Slim 5.25" Speaker Kit



Molded Acrylic Phase Plug Bullet for Extended Range Response.
Tweeters include Flush, Angle, and Surface Mounts.
12dB Impedance Matching 2-Way Crossover Networks.



AMPLIFIED ACTIVE



Now you can have Bass reinforcement in tight spaces, perfect for trucks, small cars, and convertibles.

It even fits under your car seat!



Specifications

Model Number	Number of Channels	4-ohm RMS Power	PEAK POWER	Minimum THD	Frequency Response	SPL @ 1w/1m	S/N Ratio	Damping @100Hz	Input Voltage	Dimensions L x W x H
ZRS W8	1	200 Watts	600 Watts	<0.05%	20Hz-120Hz	92dB	>100dB	>100	200mV-3V	14.5" x 9.5" x 3"
ZRS W10	1	300 Watts	800 Watts	<0.05%	20Hz-250Hz	94dB	>100dB	>200	200mV-5V	16" x 12" x 3"

Low Profile Active Subwoofer, Cast Aluminum Anti Vibration Chassis, RCA Line Level Input, High Level OEM Radio Integration, LED Power and Diagnostic Status Indicator, Phase Shift Control 0-180 Degrees, +12dB Variable Bass Boost Equalization Control, Low-Pass Electronic Crossover: 50-150Hz Adjustable, Soft Start Mute & Delay Turn-On-Off Circuitry, IC Controlled Diagnostic Circuitry, Includes Dashboard Mount Remote Bass Control

SUBWOOFER



ZRS12-800-D4
12" DVC 4-ohm

Specifications

Model Number	Size	Basket Type	Voice Coil Type	Voice Coil Size	RMS/Peak Power	Frequency Response	Magnet Weight	Structure Weight	SPL @ 1w / 1m	Mounting Depth
ZRS12-600-D4	12"	Steel	DVC 4-ohm	2.5"	600/1200	30-500Hz	10 lbs.	16 lbs.	90dB	6.4"
ZRS12-800-D4	12"	Cast	DVC 4-ohm	2.5"	800/1600	30-500Hz	12 lbs.	24 lbs.	93dB	7.75"
ZRS15-800-D4	15"	Cast	DVC 4-ohm	2.5"	800/1600	30-500Hz	12 lbs.	25 lbs.	94dB	8.0"
ZRS10-1000-2	10"	Cast	SVC 2-ohm	3"	1000/2000	30-500Hz	14 lbs.	33 lbs.	87dB	7.6"
ZRS10-1000-4	10"	Cast	SVC 4-ohm	3"	1000/2000	30-500Hz	14 lbs.	33 lbs.	87dB	7.6"
ZRS12-1000-2	12"	Cast	SVC 2-ohm	3"	1000/2000	25-500Hz	14 lbs.	35 lbs.	89dB	7.9"
ZRS12-1000-4	12"	Cast	SVC 4-ohm	3"	1000/2000	25-500Hz	14 lbs.	35 lbs.	89dB	7.9"
ZRS15-1000-2	15"	Cast	SVC 2-ohm	3"	1000/2000	25-500Hz	14 lbs.	36 lbs.	92dB	8.6"
ZRS15-1000-4	15"	Cast	SVC 4-ohm	3"	1000/2000	25-500Hz	14 lbs.	36 lbs.	92dB	8.6"



FEATURES

- BASKET STYLE**
CAST ALUMINUM DIAMOND CUT FINISH,
BAND FINISH BLACK TEXTURE COATING.
- COOLING TECHNOLOGY**
MAGNET MOTOR HEATSINK WITH HEAT-PUMP.
- SPIDER CONSTRUCTION**
QUAD LAYER, LINEAR PROGRESSIVE CONEX SPIDERS.
- TINSEL LEADS**
INTEGRATED HIGH-CURRENT 4-LAYER ROUND LEADS.
- VOICE COIL CONSTRUCTION**
BLACK ALUMINUM 4-LAYER VOICE COIL FORMER.
- MAGNET**
ULTRA SATURATED, HIGH "BL" MAGNETIC MOTOR GAP,
ONE-PIECE EXTENDED POLE TECHNOLOGY.
- SURROUND MATERIAL**
OVERSIZED DOUBLE LAMINATED STITCHED SURROUND.
- TERMINALS**
DIRECT CONNECT 10 GAUGE WIRE.
- X-MAX MEASUREMENT**
X-MAX: 26-30MM PEAK-TO-PEAK
- WASHER PLATE**
WASHER PLATE THICKNESS: 14MM
- CONE MATERIAL**
FIBER REINFORCED PAPER COMPOSITE CONE.

DAYTONA

COMPETITION SERIES

FOR THE AUDIO PURIST.



Specifications

Model Number	Number of Channels	4-ohm RMS Power	2-ohm RMS Power	Maximum RMS Power	Twin Amps Bridged	Minimum THD	Frequency Response	S/N Ratio	Damping @100Hz	Channel Separation	Dimensions L x W x H
DCA2000	2	175 Watts	275 Watts	550W @ 4-ohm Mono Bridged	N/A	<0.01%	10Hz-65KHz	>103dB	>1600	>77dB	18" x 12" x 2.5"
DCA4000	4	150 Watts	225 Watts	450W x 2 @ 4-ohm Mono Bridged	N/A	<0.01%	10Hz-65KHz	>102dB	>700	>70dB	20" x 12" x 2.5"
DCA1200d	mono	300 Watts	600 Watts	1200W @ 1-ohm	2400W	<0.01%	10Hz-250Hz	>92dB	>250	mono	18" x 12" x 2.5"
DCA1600d	mono	400 Watts	800 Watts	1600W @ 1-ohm	3200W	<0.01%	10Hz-250Hz	>93dB	>250	mono	20" x 12" x 2.5"
DCA5000	5	125W x 4 + 500W x 1	250W x 4 + 700W x 1	500 x 2 @ 4-ohm + 700W x 1 @ 2-ohm	N/A	<0.01%	10Hz-65KHz	>103dB	>650	>70dB	24" x 12" x 2.5"

The Advanced Remote Control places complete amplifier operating status at your fingertips. Besides controlling the amount of bass, the ARC monitors and displays the DC voltage, and internal amplifier operating temperature while indicating amplifier clipping, diagnostic conditions, and peak channel output.

Assembled using aircraft grade billet aluminum with a fine hair line finish.

The soft spring-loaded control panel door swings open fluidly at your touch, revealing all of the amplifiers controls. The cool blue LED lighting changes color to red illumination upon opening the panel and returns to blue when the panel is closed.

- Complete Bass Processing with Cadence Bass Focus® and Bass Equalization Control
- 24dB Linkwitz-Riley Crossover Circuitry
- High-Pass/Low-Pass/Band-Pass Control with 10X Frequency Multiplier
- 9 Volt Input Gain Sensitivity
- Power/Protection/Distortion Indicators
- Master/Slave Multi-Amp Connection and Bridging
- RCA Preamp Line Output

➔ True to life performance.

DAYTONA

COMPETITION SERIES

FOR THE POWER FANATIC.



Specifications

Model Number	Size	Type	RMS/Peak Watts	Frequency Response	Magnet Size	Structure Weight	Impedance	SPL @ 1w / 1m	Mounting Depth
DCS102	10"	2-Way	150/500	20Hz-30KHz	75 oz.	130 oz.	3-ohm	98dB	4.37"
DCS812	8" x 12"	2-Way	150/500	25Hz-30KHz	75 oz.	130 oz.	3-ohm	98dB	5.12"

- Orange Chrome Electroluminescent Cone
- Oversized Butyl Rubber Surround
- 2" Four Layer Kapton Voice Coil
- Chrome Yoke and Washer Plates
- Extended Magnet Motor Structure
- One Piece Extended Pole Technology
- Conex Spider with Integrated Tinsel Leads
- Nickel Plated 5-Way Binding Post Terminals
- Heavy Duty Anti-Vibration Steel Frame
- 2" Silk Soft Dome Midrange-Tweeter
- Ferro-Fluid Enhanced Voice Coil Cooling System
- Audiophile Mylar Capacitor 2-Way Crossover

3
OHM

➔ Speciality Sizes
8" x 12" and 10" Speakers.

DAYTONA

COMPETITION SERIES

FOR THE SPL FREAK.



FEATURES

- BASKET STYLE**
Cast aluminum diamond cut finish.
Sand finished, black textured coating.
- COOLING TECHNOLOGY**
Magnet motor heatsink with heat-pump.
- SPIDER CONSTRUCTION**
Quad layer, linear progressive Conex spiders.
- TINSEL LEADS**
Integrated high-current 4-layer round leads.
- VOICE COIL CONSTRUCTION**
3" black aluminum, 4-layer voice coil former.
High power, 4-layer voice coil winding.
- MAGNET**
Ultra saturated, high "BL" magnetic motor gap.
One-piece extended pole technology.
- SURROUND MATERIAL**
Oversized, double-laminated stitched surround.
Surround stitched to cone body.
- TERMINALS**
Direct-connect 10 gauge wire.
- X-MAX MEASUREMENT**
X-Max: 24mm Peak-to-Peak
- WASHER PLATE**
Washer plate thickness: 27mm
- CONE MATERIAL**
Fiber reinforced paper composite cone.
Inverted poly 3-dimensional dust cap.

Specifications

Model Number	Size	Basket Type	Voice Coil Type	Voice Coil Size	RMS/Peak Power	Frequency Response	Magnet Weight	Structure Weight	SPL @ 1w / 1m	Mounting Depth
DCW 12RVC	12"	Cast	DVC 2-ohm	3"	1500/3000	20-500Hz	15 lbs.	30 lbs.	92dB	7.5"
DCW 15RVC	15"	Cast	DVC 2-ohm	3"	1500/3000	20-500Hz	18 lbs.	40 lbs.	92dB	7.5"
DCX12-1500-2	12"	Cast	SVC 2-ohm	3"	1500/3000	30-500Hz	22 lbs.	50 lbs.	89dB	8.5"
DCX12-1500-4	12"	Cast	SVC 4-ohm	3"	1500/3000	30-500Hz	22 lbs.	50 lbs.	89dB	8.5"
DCX15-1500-2	15"	Cast	SVC 2-ohm	3"	1500/3000	30-500Hz	23 lbs.	53 lbs.	92dB	9.5"
DCX15-1500-2	15"	Cast	SVC 4-ohm	3"	1500/3000	25-500Hz	23 lbs.	53 lbs.	92dB	9.5"
DCW15-D1	15"	Cast	DVC 1-ohm	3"	2500/10K	25-500Hz	23 lbs.	53 lbs.	92dB	9.5"
DCW15-D2	15"	Cast	DVC 2-ohm	3"	2500/10K	25-500Hz	23 lbs.	53 lbs.	92dB	9.5"
DCW18-D1	18"	Cast	DVC 1-ohm	3"	2500/10K	25-500Hz	23 lbs.	53 lbs.	92dB	9.5"
DCW18-D2	18"	Cast	DVC 2-ohm	3"	2500/10K	25-500Hz	23 lbs.	53 lbs.	92dB	9.5"

**RVC MODELS ARE
FIELD RECONABLE**
COMES WITH ONE
COMPLETE EXTRA KIT
PACKAGED IN ALUMINUM
CARRY CASE



DAYTONA

COMPETITION SERIES

10000
WATTS



DUAL 2 OHM - 5 INCH
VOICE COIL

FREQUENCY RESPONSE
12Hz-600Hz

CADENCE

DCX 34 INCH

the world's **LARGEST** WOOFER



specs

Magnet Weight: 500oz / 31 pounds
Woofers Weight: 103Kg / 227 pounds
24 Magnet Motor Structure
Voice Coil Size: 5"
VC Type: Dual 2-ohm
Cone Material: Aluminum, Cloth Surround
Frequency Response: 12Hz-600Hz
Peak Power Handling: 10,000 Watts
Resonance Frequency: 21Hz
SPL: 91dB±3dB

UNITED

SERIES

CLASS D MONOBLOCK

- High Speed MOSFET Power Supply
- Studio-Grade Bipolar Output Stage Transistors
- Fully Adjustable 12dB/Octave Crossovers
- Low-Pass: 10Hz-50Hz
- Fully Adjustable Bass EQ Boost Control
- Mute and Delay Soft Start System
- Full IC-Controlled Protection Circuitry
- Fully Adjustable Subsonic Filter
- Adjustable Bass Focus Control
- Dashboard Bass Remote Control Included
- Master/Slave Amplifier, Daisy Chain Bridging Capable
- 8 Volt Pre-amp Circuitry
- RCA Pre-amp Line Output
- Phase Control Switch

CLASS AB STEREO AMPS

- High Speed MOSFET Power Supply
- Studio-Grade Bipolar Output Stage Transistors
- Fully Adjustable 12dB/Octave Crossovers
- Low-Pass: 40Hz-150Hz
- High-Pass: 50Hz-500Hz
- 18dB Bass EQ Boost Control
- 3-Channel Mixed Mono Capable
- Mute and Delay Soft Start System
- Full IC-Controlled Protection Circuitry
- Fully Adjustable Subsonic Filter
- Dashboard Bass Remote Control Included
- 8 Volt Pre-amp Circuitry
- RCA Pre-amp Line Output
- Input Mode Selector Switch

OLYMPIA

- Dual 0/1 gauge power and ground terminals

BOSTON

- Low Pass : 50Hz-4KHz
- High Pass : 15Hz-1KHz



POWERFULLY ENGINEERED AMPLIFIERS

Model Number	Number of Channels	4-ohm RMS Power	2-ohm RMS Power	Maximum RMS Power	Twin Amps Bridged	Minimum THD	Frequency Response	S/N Ratio	Damping @100Hz	Channel Separation	Dimensions L x W x H
Chicago	4	90 Watts	140 Watts	280W x 2 @ 4-ohm Mono Bridged	N/A	<0.05%	10Hz-40KHz	>100dB	>220	>65dB	22" x 7.25" x 2.25"
Vegas	4	135 Watts	225 Watts	450W x 2 @ 4-ohm Mono Bridged	N/A	<0.01%	10Hz-40KHz	>100dB	>220	>65dB	24" x 7.25" x 2.25"
Boston	5	75W x 4 + 250W x 1	100W x 4 + 400W x 1	200 x 2 @ 4-ohm + 400W x 1 @ 2-ohm	N/A	<0.01%	10Hz-40KHz	>100dB	>220	>65dB	20" x 7.25" x 2.25"
Phoenix	2-ohm mono	800 Watts	1200 Watts	1200W @ 2-ohm	2400W @ 4-ohm	<0.01%	10Hz-500Hz	>100dB	>220	mono	20" x 7.25" x 2.25"
Dakota	1-ohm mono	400 Watts	600 Watts	1200W @ 1-ohm	2400W @ 2-ohm	<0.01%	10Hz-500Hz	>100dB	>220	mono	15" x 9.25" x 2.5"
Olympia	1-ohm mono	500 Watts	1000 Watts	2000 Watts @ 1-ohm	4000W @ 2-ohm	<0.01%	10Hz-500Hz	>100dB	>220	mono	22" x 9.25" x 2.5"

DASHBOARD BASS REMOTE



The Olympia features the Cadence exclusive "Professional Peak Limiter Circuitry," which guarantees distortion-free musical playback at all levels.

UNITED

S E R I E S

The **QXR-7** is designed for sound quality audiophiles seeking to custom tailor their crossover functions and frequencies to multi-amp sound systems.

SPECIFICATIONS

Rear Low Pass	32Hz - 250Hz Subwoofer
Rear High Pass	40Hz - 400Hz Midrange
Front High Pass	40Hz - 400Hz Midrange 800Hz - 8KHz Mid/High
Characteristics	Selectable 18dB or 6dB per Octave Slope, 2nd Order
Equalization	0 - 12dB Boost
Frequency Resp	20Hz - 20KHz
T.H.D	<0.01%
S/N Ratio	>90dB
Maximum Output	7 Volts
Dimensions	5 x 1.75 x 7 (W"xH"xD")



**7 VOLT
LINE DRIVER**



QXR-7

The crossover slopes can be programmed to either a steep 18dB or a gentle roll-off of 6dB. All frequencies are fully adjustable, and you can even multi-link two QXR-7's for an additional 6 channels of output. Other features include an adjustable parametric bass equalizer with adjustable boost, a phase shift-control, and an audio stereo/mono selector.

This self-powered unit features a fully isolated DC to DC power supply, which boasts a 7 volt line driver signal. The QXR-7 comes complete with a 14' cable and dashboard bass remote control.

CEQ-773



MP3

7 Band Parametric Equalizer
Subwoofer Crossover

Vehicle interiors have always challenged high fidelity audio reproduction. High frequency reflections off windows and over damping of bass on cloth interiors can make even the best speakers sound shrill and dull. Cadence signal processors are the very best at correcting these anomalies! They provide sonic precision, flexibility, and control, allowing you to fine-tune your audio system to the particular acoustics of your vehicle's interior.

This series of Cadence Parametric and Parametric Equalizers integrates signal line drivers with equalization and crossover functions, combining them all into one unit. Cadence signal processors create clean, noise-free, high voltage signals while conserving valuable interior space and installation time.

MP3 MINI JACK FRONT PANEL INPUT with Independent **VOLUME CONTROL**. Integrates signal driver with subwoofer crossover and equalization functions into one unit. The subwoofer control features a double shaft design: The outer knob controls the frequency while the inner knob controls the gain. The 7-Volt Line Driver operates for all channels via fully isolated PWM Power Supply. Variable +/-18dB Boost/Cut control at each equalizer frequency.

Full aircraft-style night illumination.

SPECIFICATIONS

Band 1 Center	400Hz Bass
Band 2 Center	100Hz Mid Bass
Band 3 Center	275 Hz Upper Bass
Band 4 Center	700Hz Midrange
Band 5 Center	2KHz Mid / High
Band 6 Center	8KHz Tweeter
Band 7 Center	14KHz Super Tweeter
Equalization Control	18dB Boost / Cut
Frequency Response	10Hz - 50KHz
LP X-Over Frequency	32Hz - 320Hz @ 18dB
T.H Distortion	<0.05%
S/N Ratio	105dB
Maximum Output	7 Volts
Dimensions	7 x 1 x 4.5 (W"xH"xD")

**7 VOLT
LINE DRIVER**



UNITED

S E R I E S

ZRS2C iOn TECHNOLOGY CAPACITOR

Extreme Stiffening Capacitor with Digital Voltage Metering and blue night illumination.

2 FARAD

24 VOLT
LOW ESR

ZRS3C iOn TECHNOLOGY CAPACITOR

Extreme Stiffening Capacitor with Digital Voltage Metering and blue night illumination.

3 FARAD

24 VOLT
LOW ESR



iOn TECHNOLOGY CAPACITOR

iOn Technology charges and discharges in nano seconds, faster than any other ordinary capacitor!

Features built-in remote turn-on control.

CAP4DR

Extreme power stiffening capacitor with red LED digital numeric voltage meter & 6 blue LED signal flashing display. Nickel-plated, satin finished terminals. Complete with clear lucite mounting brackets.

4 FARAD

24 VOLT
LOW ESR

CAP2DR

Extreme power stiffening capacitor with red LED digital numeric voltage meter & 6 blue LED signal flashing display. Nickel-plated, satin finished terminals. Complete with clear lucite mounting brackets.

2 FARAD

24 VOLT
LOW ESR

NOS-1.5

Extreme power stiffening capacitor with red LED digital numeric voltage meter & 6 blue LED signal flashing display. Nickel-plated, satin finished terminals. Complete with NOS style angled mounting brackets, 3 feet of braided power and ground 4 gauge wire with distribution block.

1.5 FARAD

24 VOLT
LOW ESR

PROFESSIONAL AMPLIFIER INSTALLATION KITS



AMP4KIT

4 4 GAUGE WIRE KIT

AMP8KIT

8 8 GAUGE WIRE KIT

SPECIFICATIONS

- One set of 20' Twisted Pair, Double-Shielded Audiophile RCA cables.
- Woven Nylon Mesh Power Cable Shield
- 20' High Current - Low Impedance, Translucent Orange Power Cable
- 4' High Current - Low Impedance, Translucent Black Ground Cable
- Mini ANL Distribution Block with 120 AMP Fuse
- 20' Orange/Silver Heavy-Duty Speaker Wire
- 18' Remote Turn-On Wire
- 8' Split Loom Tubing
- 10 x 6" Cable Ties
- 2 Ring Terminals
- 2 Spade Terminals
- 2 Butt Connectors
- 1 Firewall Grommet
- 2 x 18-22 Gauge Butt Connectors
- 2 Female Disconnect Terminals

RCA17



Model RCA17M

High performance RCA interconnects with split pin chrome plated RCA plugs. 17' cable features twisted pair technology with double shielding including woven outer shield.

Model RCA17P

RCA interconnects with high grade molded mini RCA plugs. Cable features twisted pair technology and shielding. Same cable as included in AMP4 and AMP8 KIT.



CVL2XR

Signal Processor SQ 24dB 2-Way Crossover with 9 Volt Line Driver

- Programmable Crossover with 24dB per Octave Slopes
- Tactile Feel Fully Adjustable Frequency Controls
- Left & Right Adjustable Delay Controls.
- Sound Stage Digital Image Processor
- Bass Focus® Control
- 9-Volt Line Driver
- Fully Isolated DC-DC Power Supply
- Adjustable Subsonic Filter
- Left & Right Output Level Controls with CLIP Indicators

The CVL2XR is our newest signal processor with a host of features typically found only in high-end home audiophile units.

The unit features 2 independent 24dB per octave Linkwitz Riley HP and LP crossovers, single input level control, and dual independent output level controls for both HP and LP.

Our exclusive Digital Image Processing function creates an open, transparent sound stage with depth and clarity, while avoiding any discoloration of the music. Your sound stage will move from the lower depths of your vehicle's interior to ear level center stage, immersing you in sound.

The dual large frequency control knobs feature a click tactile response with accurate discrete frequency selections for absolutely accurate frequency selection in the range of 2000 Hz to 5000 Hz.

Innovative features abound; our exclusive Bass Focus® control, which when used in conjunction with the adjustable subsonic filter, compensates for inadequately small woofer enclosures and lifts and enhances the sound stage of smaller speakers. The CVL2XR also features dual Left and Right Delay controls with individual Red LED Clip Indicators.

As far as signal processors go, the CVL2XR is the most advanced signal processor on the market today and is self-powered, featuring a fully isolated DC to DC power supply, which boasts a 9 volt line driver signal. The units features Tiffany Style High-End RCA connections jacks.

Specifications

THD&N: <0.04%
 Input Range for 9V Output: 0.2v - 9V
 Output Impedance: 100 ohm
 Input Impedance: 30 Kohm
 SNR, A-weighted: 83dB
 Combined Frequency Response: 10Hz-53KHz
 Separation: >60dB
 Channel Balance: <0.2dB
 Delay Variator: 0-300 degrees
 HP and LP Frequency Ranges: 2KHz-5KHz
 HP and LP Frequency Slope: 24dB/octave
 Subsonic Filter Range: 10Hz-250Hz
 Subsonic Filter Slope: 12dB/octave
 Bass Focus Rumble Boost: +7dB Max
 Fuse: 0.5 amp
 Ground Isolation: 1Kohm



CVL-BG

Signal Processor Bass Generator / Harmonizer with 10 Volt Line Driver

- Digital Preamp Sound Processor
- PWM Fully Isolated Power Supply w/ Ground Isolation Control
- 10 Volt Line Driver
- Fully Adjustable Subsonic Filter
- Balanced and Unbalanced Input Selector
- Master Volume Control
- Bass Level control
- Bass Wide and Sweep Control
- LED Bass Level Peak Metering
- Includes Dashboard Remote Control

Specifications

THD&N: <0.02%
 Input Range for 10V Output: 0.2v - 10V
 Output Impedance: 100 ohm
 Input Impedance: 30 Kohm
 SNR, A-weighted: 83dB
 Combined Frequency Response: 10Hz-20KHz
 Separation: >60dB
 Channel Balance: <0.2dB
 Subsonic Filter Range: 38Hz-80Hz
 Subsonic Filter Slope: 24dB/slope
 Fuse: 0.5 amp
 Ground Isolation: Ground/220-ohm/isolated selectable
 Output Voltage: 5V / 7.5V / 10V selectable.



The CVL-BG is our most advanced digital preamp sound processor.

Its computerized circuitry searches for the full octave below threshold and processes and harmonizes the frequencies between 20Hz and 100Hz for digital bass restoration effect. The results are mind-blowing. Bass that literally explodes in your face. Impact that will collapse your chest and reinforcement that will make your skin tingle and your hair stand on end.

LLC-1

High Voltage Line Level Converter with Music Sense amplifier auto start.

The simple way to add an amplifier to an OEM car audio system without having to change your stock radio. The LLC-1 converts high-level speaker output signals to ultra low distortion RCA connections. The auto music sensing circuit eliminates the need for external remote turn on connections from your head unit.

Specifications

THD&N: <0.02%
 Input Impedance: 100 ohm
 Output Impedance: 1Kohm
 Variable Input Level: Infinity to 4Volts RMS
 THD & N: 0.001%
 Separation: >85dB



CVL COAXIAL



CVLS69C
6"x 9" 3 Way Speaker

Specifications

Model Number	Size	Type	RMS/Peak Watts	Frequency Response	Magnet Size	Structure Weight	SPL @ 1w / 1m	Mounting Depth
CVLS69C	6" x 9"	3-Way	100/300	35Hz-22KHz	30 oz.	60 oz.	95dB	3.43"
CVLS65C	6.5"	2-Way	80/240	55Hz-22KHz	25 oz.	50 oz.	93dB	2.52"

Die-Cast Aluminum Frame with Diamond Cut Finish, **Perimeter Vented Chrome Washer Plate**, Electro-Plated Black Chrome Injected Woofer Cone, **Black Butyl Rubber Surround Suspension**, Oversized 1.25" High Temperature Kapton Voice Coil, **1" Adjustable Silk Soft Dome Neodymium Midrange**, Extended Frequency 18mm Polymer Dome Neo Tweeter, **High Grade Mylar Capacitor Crossover Network**

System Includes One Complete Pair of Speakers, Custom Sculptured Grills, Speaker Hookup Wire, & Installation Hardware.

CADENCE



CVLS
EURO SERIES

The all new CVL coaxial speakers are the result of extensive research and design. The concept proposed to our engineers and technicians was:

"IF MONEY WERE NO OBJECT, WHAT WOULD BE THE BEST POSSIBLE MULTI-ELEMENT SPEAKER YOU COULD DESIGN?"

EURO-SERIES



CVLS69C
6"x 9" 3-Way Speaker



CVLS65C
6.5" 2-Way Speaker



With a lot of research and hard work, we created a speaker unlike any other. The most amazing thing is that we managed to do it and still keep the price suprisingly affordable. Beginning with a diamond cut die cast aluminum basket, we added perimeter washer plate venting and an incredibly powerful high "BL" super saturated magnet. Coupled with an oversized high temperature Kapton voice coil and butyl rubber surround, this speaker allows you to experience incredible bass impact as never before. A premium grade crossover network seamlessly separates the signals to the Neodymium soft dome midranges and tweeters for impeccable accuracy and audio presentation.

CVL6-KN

TWO-WAY 6.5" COMPONENT KIT

- 6.5" Two-Way Super Fidelity Component Speaker System
- 2" High Temperature CCAR Voice Coil on TIL Bobbin
- 3-Ohm, Neodymium Woofer Motor Structure
- Carbon/Kevlar Composite Cone Midbass-Midrange Driver
- Structural Foam Backed Cone Technology
- Aluminum Linear Phase Plug
- 20mm Aero Dimpled, Inverted Titanium Dome, Neodymium Tweeters with Flush, Angle, & Surface Mounts
- Ferro Fluid Enhanced Voice Coil Cooling System
- 12dB Impedance Matching Crossover Network System

CVL3-WK

THREE-WAY 6.5" COMPONENT KIT

- 6.5" Three-Way Super Fidelity Component Speaker System
- 2" High Temperature CCAR Voice Coil on TIL Bobbin
- 3-Ohm, Neodymium Woofer Motor Structure
- Carbon/Kevlar Composite Cone Midbass-Midrange Driver
- Structural Foam Backed Cone Technology
- Aluminum Linear Phase Plug
- 2" Silk Soft Dome Midrange with Dual Trim Panels
- 20mm Aero Dimpled, Inverted Titanium Dome, Neodymium Tweeters with Flush, Angle, & Surface Mounts
- Ferro Fluid Enhanced Voice Coil Cooling System
- 12dB Impedance Matching Crossover Network System

3 OHM SYSTEM

Both Systems Include:

One Complete Pair of Speakers, Tweeters, Crossovers, Grills, Installation Hardware & Color Coded Speaker Hookup Wire.

FEATURES

Cadence proudly presents its new line of CVL component speakers. Completely redesigned, the all new CVL series sets a benchmark for reference systems. CVL speakers reproduce instruments, voices, and sound effects in your movies naturally and convincingly. The new CVL line is sure to become an instant classic among critics and users alike.

The crossover design provides seamless separation of the highs and lows, resulting in absolutely flawless stereo imaging. CVL components possess a state of the art cone material made of a structural foam core attached to a Carbon/Kevlar fiber composite glass layer for a perfect combination of the utmost rigidity and incredible lightness. This cone technology provides unmatched linearity, tremendous strength and optimal acceleration, resulting in a pure and neutral sound that remains free from coloration and distortion. The CVL component speakers feature composite aluminum fiber baskets which are lightweight while remaining extremely rigid and dampened for a rock-solid foundation.

TWEETERS

In addition, the CVL component kits feature our new inverted dome tweeters. The inverted aero dimple finish dome functions just like any tiny woofer whose design permits a lower resonant frequency, important when determining the cutoff point between the tweeter and the midrange woofer.

This design also features a lower moving mass than conventional dome tweeters, saving energy which has an incredible effect on the soundstage. All these unique technologies combine for the absolute ultimate ultra-premium euphoric audio experience, brought to you courtesy of Cadence.

Model Number	Size	Type	RMS/Peak Watts	Frequency Response	Magnet Size	Voice Coil	Impedance	SPL @ 1w / 1m	Mounting Depth
CVL6KN	6.5"	2-Way Kit	120/350	50Hz-22KHz	Neodymium	2"	3-ohm	94dB	2.56"
CVL3WK	6.5"	3-Way Kit	150/400	50Hz-22KHz	Neodymium	2"	3-ohm	94dB	2.56"

CVL MIDBASS



EURO-SERIES

Orange Glass Fiber Cone

Butyl Rubber Surround

Oversized CCAR Voice Coil

High Temperature TIL Voice Coil Bobbin

Die-cast Aluminum Frames

CVL MBX

CVL 64MBX - CVL 68MBX
CVL 84MBX - CVL 88MBX



CVL MB

CVL 64MB - CVL 68MB
CVL 84MB - CVL 88MB



Specifications

Model Number	Size	Application	Basket Type	Impedance	Surround Style	RMS/Peak Watts	Frequency Response	Structure Weight	SPL @ 1w / 1m	Mounting Depth
CVL 64 MB	6.5"	Mid-Bass	Cast Aluminum	4-ohm	Butyl Rubber	100/200	135Hz-10.5KHz	60 oz.	98dB	3.19"
CVL 68 MB	6.5"	Mid-Bass	Cast Aluminum	8-ohm	Butyl Rubber	100/200	135Hz-10.5KHz	60 oz.	98dB	3.19"
CVL 84 MB	8"	Mid-Bass	Cast Aluminum	4-ohm	Butyl Rubber	150/300	102Hz-10KHz	80 oz.	100dB	3.62"
CVL 88 MB	8"	Mid-Bass	Cast Aluminum	8-ohm	Butyl Rubber	150/300	102Hz-10KHz	80 oz.	100dB	3.62"
CVL 64 MBX	6.5"	Mid-Bass	Cast Aluminum	4-ohm	Accordian	250/500	90Hz-9KHz	70 oz.	99dB	3.42"
CVL 68 MBX	6.5"	Mid-Bass	Cast Aluminum	8-ohm	Accordian	250/500	90Hz-9KHz	70 oz.	99dB	3.42"
CVL 84 MBX	8"	Mid-Bass	Cast Aluminum	4-ohm	Accordian	250/500	60Hz-8KHz	90 oz.	102dB	3.58"
CVL 88 MBX	8"	Mid-Bass	Cast Aluminum	8-ohm	Accordian	250/500	60Hz-8KHz	90 oz.	102dB	3.58"

All midranges packed individually.
The CVLMB do not include grills, while the CVLMBX include grills.

CVL WOOFERS

EURO-SERIES



- Super High Power 8" Subwoofer
- Double Magnet with Quad Spider Design
- Woven Carbon Fiber Inverted Cone
- Direct Connect 10 Gauge Power Wire
- 2" Four Layer Kapton BASV Voice Coil



Featuring the Cadence Super Energy Design, The only low profile subwoofers in the world that utilize a **Double Magnet Design** while still keeping an ultra slim mounting depth. The double magnet motor structure saturates the gap with more "BL" energy, making Cadence Slim Woofers more powerful while playing deeper bass without loss of control.



Specifications

Model Number	Size	Basket Type	Voice Coil Type	Voice Coil Size	RMS/Peak Power	Frequency Response	Magnet Weight	Structure Weight	SPL @ 1w / 1m	Mounting Depth
CVL8-500-4	8"	Steel	SVC 4-ohm	2"	500/1000	20-500Hz	7 lbs.	9 lbs.	92dB	4.8"
CVL10SW	10"	Steel	SVC 4-ohm	2"	250/500	36-500Hz	8 lbs.	10 lbs.	88dB	3.5"
CVL12SW	12"	Steel	SVC 4-ohm	2"	250/500	31-500Hz	8 lbs.	12 lbs.	93dB	4.1"

SUPER ENERGY DESIGN
DOUBLE MAGNET STRUCTURE

CVL SPEAKERS



CVLW 84S
8" Midrange Speaker

Specifications

Model Number	Size	Application	Basket Type	Impedance	Dust Cap	Surround Style	RMS/Peak Watts	Frequency Response	Structure Weight	SPL @ 1w / 1m	Mounting Depth
CVLM 64	6"	Mid-High	Open Steel	4-ohm	Bullet	Accordion	70/140	100Hz-7KHz	40 oz.	98dB+	2.03"
CVLM 68	6"	Mid-High	Open Steel	8-ohm	Bullet	Accordion	70/140	100Hz-7KHz	40 oz.	98dB+	2.03"
CVLM 84	8"	Mid-High	Open Steel	4-ohm	Bullet	Accordion	100/200	102Hz-10KHz	40 oz.	100dB+	2.72"
CVLM 88	8"	Mid-High	Open Steel	8-ohm	Bullet	Accordion	100/200	102Hz-10KHz	40 oz.	100dB+	2.72"
CVLM 1054	10"	Mid-High	Open Steel	4-ohm	Bullet	Accordion	150/300	60Hz-4KHz	50 oz.	100dB+	3.23"
CVLM 1058	10"	Mid-High	Open Steel	8-ohm	Bullet	Accordion	150/300	60Hz-4KHz	50 oz.	100dB+	3.23"
CVL 64N	6"	Neo-Mid-High	Graphite Acrylic	4-ohm	Convex	Accordion	100/200	105Hz-7KHz	Neodymium	93dB+	2.00"
CVL 68N	6"	Neo-Mid-High	Graphite Acrylic	8-ohm	Convex	Accordion	100/200	105Hz-7KHz	Neodymium	93dB+	2.00"
CVL 84N	8"	Neo-Mid-High	Graphite Acrylic	4-ohm	Convex	Accordion	125/250	105Hz-7KHz	Neodymium	94dB+	2.13"
CVL 88N	8"	Neo-Mid-High	Graphite Acrylic	8-ohm	Convex	Accordion	125/250	105Hz-7KHz	Neodymium	94dB+	2.13"
CVLW 64S	6"	Mid-High	Graphite Acrylic	4-ohm	Bullet	Accordion	60/120	135Hz-10.5KHz	50 oz.	98dB+	2.21"
CVLW 68S	6"	Mid-High	Graphite Acrylic	8-ohm	Bullet	Accordion	60/120	135Hz-10.5KHz	50 oz.	98dB+	2.21"
CVLW 84S	8"	Mid-High	Graphite Acrylic	4-ohm	Bullet	Accordion	100/200	102Hz-10KHz	80 oz.	100dB+	2.80"
CVLW 88S	8"	Mid-High	Graphite Acrylic	8-ohm	Bullet	Accordion	100/200	102Hz-10KHz	80 oz.	100dB+	2.80"

Reinforced Black Paper Cone with Treated Cloth Surround, Oversized High Temperature CCAR Voice Coil, TIL Bobbin, Shallow Mounting Depth, Packed individually with custom molded grill, CVLWS Versions features dampened anti-vibration graphite acrylic baskets, CVLM Version features slim steel baskets.



CVLM64 / CVLM68
6" 4 and 8 ohm Midrange Speaker



CVLM84 / CVLM88
8" 4 and 8 ohm Midrange Speaker



CVLM1054 / CVLM1058
10" 4 and 8 ohm Midrange Speaker



CVL64N / CVL68N / CVL84N / CVL88N
6" 4 and 8 ohm Neodymium Midrange Speaker



CVLW84 / CVLW88
8" 4 and 8 ohm Midrange Speaker



Neo Midrange with "High Density Neodymium Magnet"

ULTRA SLIM MOUNT

CVLTWEETERS

EURO-SERIES

Our exclusive design features a one piece Titanium VC former which is also the dome of the tweeter! There are no internal glue joints from the VC to the dome, thus all heat generated by the coil is efficiently dissipated from the dome. The CVLT-10 tweeters handle more power and sound smoother. The machined aluminum housing suspends the dome structure with a special rubber edge for extra smooth response.

Packed in pairs with In-Line 12dB Crossover Networks, Flush, Surface, and Angle mounts



- Oversized 2" High Temperature Kapton Voice Coil
- 30oz. Magnet / 60oz. Motor Structure Weight
- Titanium Dome Structure with Ferro Fluid Cooling
- Cast Aluminum Frame

Packed individually with Mylar Bass Blocking Capacitor. Replacement Diaphragms Available CVLT22-RC.



- 1" High Temperature Kapton Voice Coil
- 10oz. Magnet / 20oz. Motor Structure Weight
- Aluminum Diaphragm
- Cast Aluminum Frame

Packed in pairs with Mylar Bass Blocking Capacitors. Replacement Diaphragms Available CVLT35-RC.



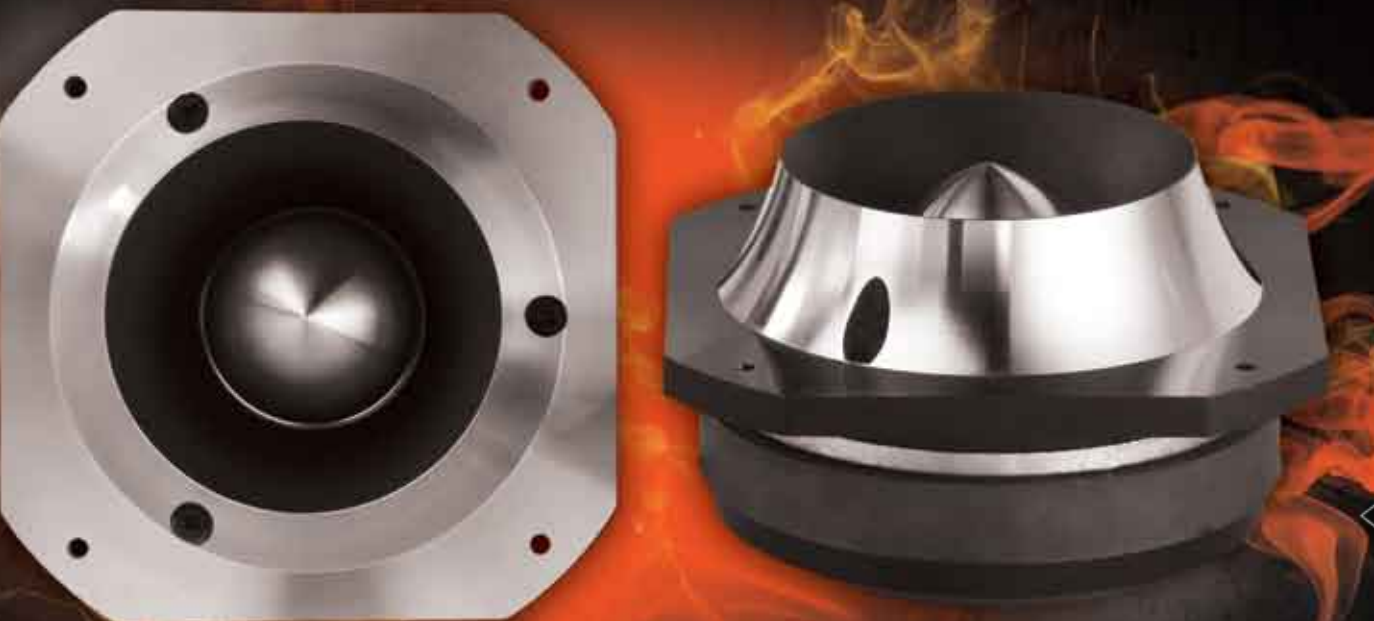
- Oversized 1" High Temperature Kapton Voice Coil
- High Density Neodymium Motor Structure Weight
- Titanium Dome Structure with Ferro Fluid Cooling
- Cast Aluminum Frame with Chrome Finish

Packed in pairs with Mylar Bass Blocking Capacitors. Replacement Diaphragms Available CVLT60-RC.



Tune-up pod speakers measure 5"H x 3"W x 1.5"D. They can be flush or surface mounted on doors, dash, and B pillars.

Packed in pairs with Built-in 2-Way Crossover Network. The perfect solution when you want to add more dynamic range to your system. Simply wire the CVLS-T1 to your existing door speakers, stand back and get ready to be blown away. You'll never believe that your system can sound so good. Features a 1" soft dome swivel tweeter and 2.5" midrange driver.



CVLT 50
2" Titanium
Bullet Horn Tweeter

- Oversized 2" High Temperature Kapton Voice Coil
- 30oz. Magnet / 60oz. Motor Structure Weight
- Titanium Dome Structure with Ferro Fluid Cooling
- Cast Aluminum Frame

Packed individually with Mylar Bass Blocking Capacitor. Replacement Diaphragms Available CVLT50-RC.



Specifications

Model Number	Voice Coil Dome Size	Type	RMS/Peak Watts	Frequency Response	Magnet Size	Impedance	SPL @ 1w / 1m	Mounting Depth
CVLT10	1" / 25mm	Titanium Tweeter	100/200	1.4KHz-25KHz	NEO	4-ohm	96dB+	1.02"
CVLT22	2" / 50mm	Horn Tweeter	50/100	3.5KHz-20KHz	30/60 oz.	4-ohm	107dB+	2.56"
CVLT35 Nickel	1" / 25mm	Super Tweeter	75/150	3KHz-23KHz	10/20 oz.	4-ohm	102dB+	1.50"
CVLT35 Black	1" / 25mm	Super Tweeter	75/150	3KHz-23KHz	10/20 oz.	4-ohm	102dB+	1.50"
CVLT50	2" / 50mm	Horn Tweeter	50/100	2KHz-25KHz	30/60 oz.	6-ohm	107dB+	1.75"
CVLT60	1" / 25mm	Bullet Tweeter	50/100	3KHz-20KHz	NEO	3-ohm	109dB+	1.60"
CVLST1	2" Mid + 1" Tweet	Midrange-Tweeter	35/70	250Hz-22KHz	NEO	8-ohm	95dB+	1.50"

SEAQUA

MARINE AUDIO



Also Available:
SQS-65B - HIGH GLOSS BLACK

SQS-65 - HIGH GLOSS

Two-Way 6.5" Marine Speakers

- 6.5" Two-Way High Fidelity Speaker System
- Fully Marinized Against Salt & Fresh Water Conditions
- Completely Water/Rust Proof
- 80 Watts RMS System Power / 120 Watts MAX Power
- Polypropylene Mica Injected Cone with Santoprene Surround
- Oversized 1.25" Kapton Voice Coil
- 20mm PEI Dome Neodymium Midrange - Tweeter
- In-Line Crossover Network
- Frequency Response: 55Hz - 22KHz
- Sound Pressure Level: 93dB @ 1w/1m
- Mounting Depth: 2.65"
- System Includes One Complete Pair of Speakers, Crossovers, Sealing Gaskets, Grills & Installation Hardware



ALL SPEAKERS COME WITH SEALING GASKETS AND TWO-WAY CROSSOVERS.



Also Available:
SQW-65B - HIGH GLOSS BLACK

SQW-65 - HIGH GLOSS

Two-Way 6.5" Marine Wake Board Speakers

- 6.5" Two-Way High Fidelity Speaker System
- Fully Marinized Against Salt & Fresh Water Conditions
- Completely Water/Rust Proof
- 160 Watts RMS System Power / 250 Watts MAX Power
- Polypropylene Mica Injected Cone with Santoprene Surround
- 25 oz. Magnet Motor Structure
- Oversized 1.25" Aluminum Voice Coil
- 1/2" Polymide Dome Neodymium Midrange - Tweeter
- Built-in-2-Way 12dB Crossover Network
- Frequency Response: 70Hz - 20KHz
- Sound Pressure Level: 96dB @ 1w/1m
- Mounting Depth: 9.00"
- System Includes One Wakeboard Speaker, Mounting Bracket, Grill & Installation Hardware



SQW-10W - HIGH GLOSS

10" Marine Subwoofer

- 10" Marine Subwoofer
- Fully Marinized Against Salt & Fresh Water Conditions
- Completely Water/Rust Proof
- 4 Ohm / 300 Watts RMS System Power / 600 Watts MAX Power
- Polypropylene Mica Injected Cone with Santoprene Surround
- 25 oz. Magnet / 50 oz. Magnet Motor Structure
- Oversized 2" Aluminum Voice Coil
- Frequency Response: 40Hz - 2KHz
- Sound Pressure Level: 94dB @ 1w/1m
- Mounting Depth: 4.65"



Also Available:
SQW-10B - HIGH GLOSS BLACK

SQS-69 - HIGH GLOSS

Two-Way 6"x9" Marine Speakers

- 6"x9" Two-Way High Fidelity Speaker System
- Fully Marinized Against Salt & Fresh Water Conditions
- Completely Water/Rust Proof
- 60 Watts RMS System Power / 120 Watts MAX Power
- Polypropylene Mica Injected Cone with Santoprene Surround
- Oversized 1.25" Kapton Voice Coil
- 1" PEI Dome Neodymium Midrange-Tweeter
- In-Line Crossover Network
- Frequency Response: 45Hz - 22KHz
- Sound Pressure Level: 95dB @ 1w/1m
- Mounting Depth: 3.00"
- System Includes One Complete Pair of Speakers, Crossovers, Sealing Gaskets, Grills & Installation Hardware



Also Available:
SQS-69B - HIGH GLOSS BLACK



CADENCE

6519 Highway 9 North
Howell, NJ 07731 USA
Phone 732 370 5400
Fax 732 370 5553

www.cadencesound.com
cadence@cadencesound.com